



INNERVIEW

NEWSLETTER OF THE INNER TEMPLE

HILARY TERM 2007

HAPPY NEW YEAR AND WELCOME BACK

Here at the Treasury Office we are, as ever, busy organising events for our members. We have an exciting term ahead with all our regular dinners taking place but also, of course, the annual Easter Egg Hunt. In addition, we have two special events; the *Treasurer's Reception for Benchers* to welcome the new year (11th January 2007) and the *Hall and Circuit Dinner – Bar Mess* to bring together members of Hall from all the circuits for an enjoyable evening (9th February 2007). Numbers are limited for some of these events, so it is worth booking early.

We hope that you will be able attend as many of these events as possible as well as taking advantage of the other services and facilities that the Inn provides. With outstanding banqueting facilities and a friendly and efficient service, not to mention the creative, delightful cuisine, the Inn offers the perfect venue for your functions. The Library provides an ever-growing selection of books and publications and excellent service. The Pegasus Bar, with its

continued overleaf

INNERVIEW

The Treasury Office,
Inner Temple, London, EC4Y 7HL
Telephone 020 7797 8250
www.innertemple.org.uk



CONTENTS

From the Treasurer	2
Bar Mess	3
Easter Egg Hunt 2007	3
Riverside Walk Trophy	4
Catering News	4
Lord Woolf Portrait	5
Any Questions?	5
Inner Temple Admissions Data Project	6
Library News	7
The Bar Musical Society	8
2008 Anniversary Book	9
Education & Training Department	10
Inner Temple In Malaysia	13
Inner Temple Lecture Series 2007	14
Temple Music Foundation	14
The Temple Church	15
Diary	16
Staff News	18



PAGE 2



PAGE 5



PAGE 8

FROM THE TREASURER

There is plenty to look forward to in 2007. The Legal Services Bill, a decision on Deferral of Call, the implementation of the Carter recommendations are among the known. No doubt there will be events and challenges not yet anticipated. For me the challenge and the privilege is to be the Treasurer of the Inner Temple for the year 2007.

Within the Inn we still have to sort out the use and development of Serjeants' Inn. We have a great heritage of space and accommodation which the Estates Committee and the Surveyor's Department in particular strive to maintain, protect and use to the best advantage.

Education and Training remain the other vital contribution which the Inn makes. I am in awe of the achievements of the staff of the Education and Training Department, but the closer I get to knowing what is going on, I am also humbled and thankful for the contribution made by voluntary effort and sparing of

precious time of the members of the Inn, members of Hall and Benchers. Advocacy training, scholarship selection are two obvious features of activities which draw in a lot of people.

I know I can look forward to the help and support, and, no doubt, advice from so many members of the Inn in making sure the Inner Temple maintains its standards in all it sets out to do. A year is a short time span. If I can nudge the rudder in the direction of the right course I shall be grateful.

However I cannot close this note without saying that I intend to enjoy thoroughly my term of office and I hope everyone else will enjoy it with me.

STEPHEN WILLIAMSON QC

continued from overleaf

carefully designed menus and welcoming atmosphere, continues to thrive.

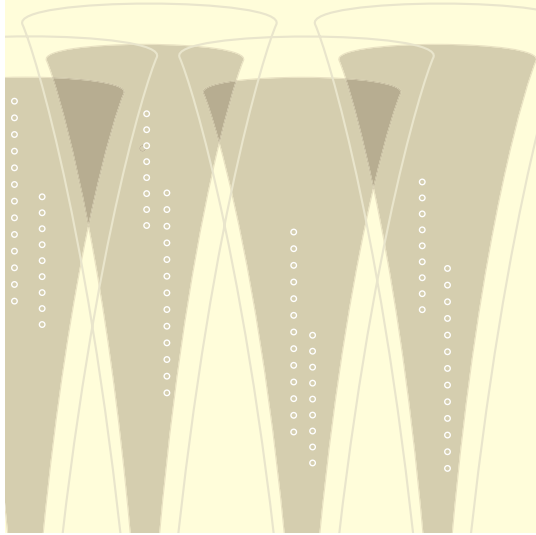
The Education & Training Department has a large portfolio of courses and schemes for our students, pupils and the practising barristers. Each year a considerable amount of time and effort is invested to ensure that these services are of the highest quality. We have a large number of volunteers to help (to whom we are grateful) but with the increasing number of events on offer, we always need more... Please do consider sparing your valuable time and contact us if you think you might be able to help.

As the Inn's staff, we do all we can to

provide a first rate service for you, with the hope that you will make full use of your Inn and take advantage of all the benefits of your membership.

**YESHIM HARRIS
DEPUTY SUB-TREASURER**

BAR MESS



The Treasurer, Stephen Williamson QC, requests the pleasure of your company at a dinner for all Inner Temple members of the Bar in and out of London.

9th February 2007
7.15pm for 7.45pm Inner Temple Hall
with spouses/guests

Dress code: Black Tie

Tickets Cost:

£50 over 7 years' Call, same for spouse/guest
£30 under 7 years' Call, same for spouse/guest

To book, please contact

Kate Peters on 020 7797 8250
or email kpeters@innertemple.org.uk

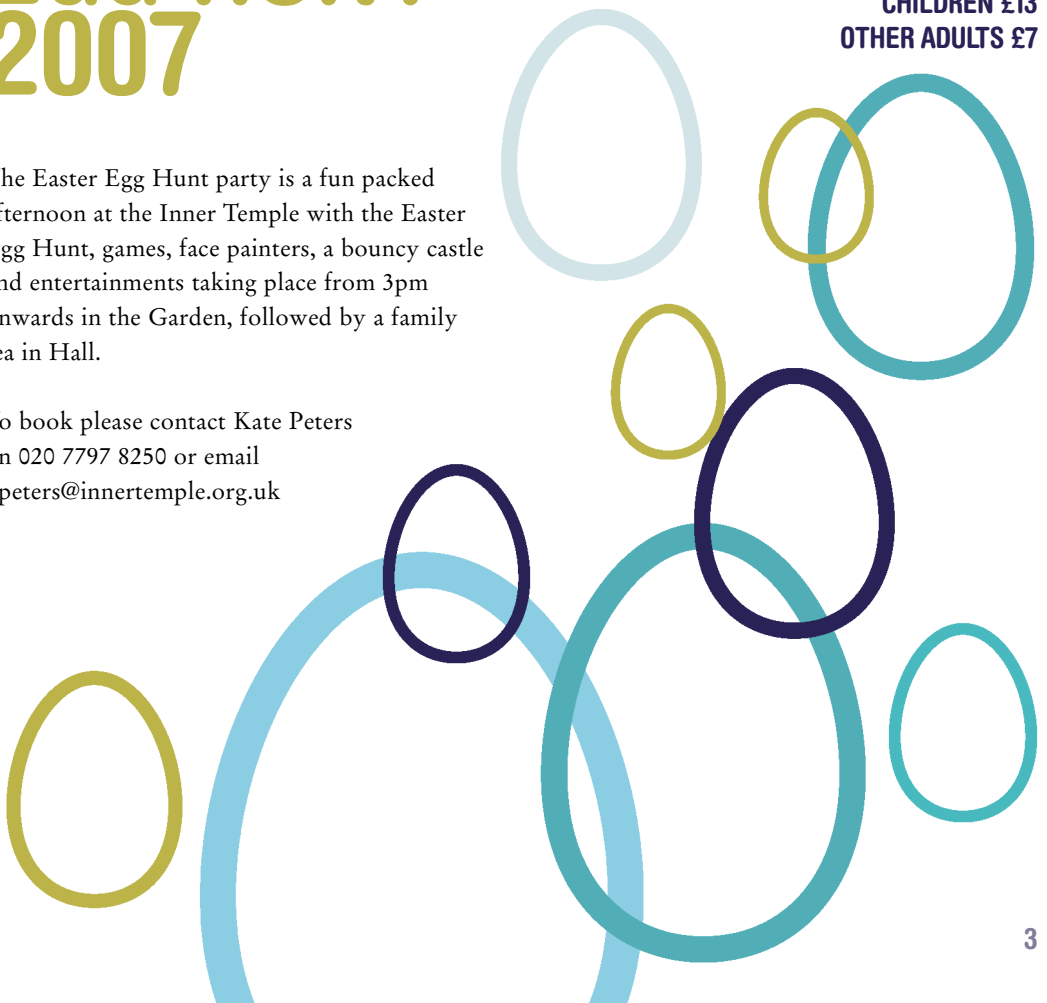
EASTER EGG HUNT 2007

SUNDAY 25 MARCH 2007
3:00PM – 5:30PM

TICKETS ARE FREE FOR PARENTS
CHILDREN £13
OTHER ADULTS £7

The Easter Egg Hunt party is a fun packed afternoon at the Inner Temple with the Easter Egg Hunt, games, face painters, a bouncy castle and entertainments taking place from 3pm onwards in the Garden, followed by a family tea in Hall.

To book please contact Kate Peters on 020 7797 8250 or email kpeters@innertemple.org.uk



RIVERSIDE WALK TROPHY



The Inn is proud to be awarded the Riverside Walk Trophy of the Flowers in the City Campaign Summer 2006 Competition (City of London Corporation). This is the fifth time the Inn has received this award. All praise and thanks must go to Les Ball (Head Gardener) and his team.

Pictured is Les Ball and former Lord Mayor David Brewer.

SUMMER IS A COMIN' IN



Believe it or not, we are starting to organise next Summer's events season. The Inn's impressive prize winning garden provides the perfect backdrop for your summer party whether you are celebrating privately or a hosting a work-related event. The beautifully lined, floored and carpeted marquee will be up for an increased duration of five weeks this year given the success of last year's garden parties. For up to

1000 guests, the marquee can host any of your summertime receptions, and the Catering Department will provide their excellent selection of canapés, bowl food or barbecue options.

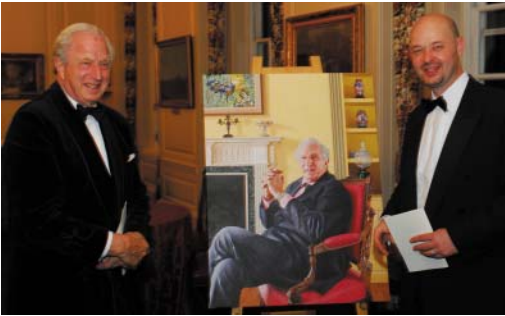
Whatever the occasion, please contact the Catering Department for more information on 020 7797 8230, email catering@innertemple.org.uk or visit www.innertemplecatering.org.uk

LORD WOOLF PORTRAIT

MASTER SHIELDS,
MASTER OF THE PICTURES

At last November's Private Guest Night, the Inner Temple unveiled the latest addition to its collection, a portrait in oil of The Rt Hon The Lord Woolf who retired as Lord Chief Justice last year.

Commissioned earlier this year, it is painted by Andrew Tift, whose other subjects have included Tony Benn and Glenys and Neil



Kinnock for the permanent collection of the House of Commons and who has subsequently won the first prize in this year's BP Portrait Prize at the National Portrait Gallery for his portrait of Lucian Freud's first wife 'Kitty'.

The portrait captures Lord Woolf, in relaxed mode, his hands clasped reflectively, a familiar pose, if not dress, to those who appeared before him in Court.

ANY QUESTIONS?

The Inn was very proud to host *Any Questions?* on the 10 November 2006 live from Inner Temple Hall. The panellists included the Inn's

own Master Falconer, Ann Widdecombe MP, Patience Wheatcroft and Martin Narey and was presented as usual by Jonathan Dimbleby.



INNER TEMPLE ADMISSIONS DATA PROJECT

BY DR CLARE RIDER, ARCHIVIST

In a previous edition of *Inner View* (Trinity 2004), I reported that the Inn had received a Heritage Lottery Fund grant to set up an online database of the Inner Temple's past members (ITAD). I am pleased to say that the HLF project has been successfully completed and officially launched. To mark the occasion, a reception was held early last year. The Sub-Treasurer welcomed guests, who included representatives from the Heritage Lottery Fund, the National Archives, the Centre for Metropolitan History and the Society of Genealogists, whilst Master Baker outlined the significance of the database for genealogical, biographical, historical, statistical and other research. It was only left to me to acknowledge the generosity of the Heritage Lottery Fund, who awarded the Inn a grant of nearly £50,000, and to thank all those involved in the project, particularly the project archivist, Jane Branfield. Guests were then able to view an exhibition of items from the Inn's archive collection on display in the Luncheon Room and to witness the database in operation. It was a good evening, enjoyed by those who attended.

The database, which has been compiled over the past two years, forms part of the Inner Temple's website. It may be accessed directly (www.innertemple.org.uk/archive/itad/index.asp) or via the Historical Records page of the Inn's website. It currently includes members admitted between 1547 and 1850 and, in addition to membership details, the site provide interpretative material about legal education and the legal profession in the past as well as guidance as to how to search the database.

ITAD has opened up a wealth of information about Inner Templars admitted before 1850: not just those destined to be lawyers, such as Sir Edward Coke and John Selden, but also future politicians, courtiers, authors, scientists and adventurers. These include Elizabeth I's



favourites Lord Robert Dudley, Sir Christopher Hatton and the Earl of Essex, the circumnavigator and adventurer, Sir Francis Drake, and the author and biographer, James Boswell. Offering easy access to remote users, the database has already proved popular. Usage figures are impressive (5,492 visits and 29,372 hits from 1 December 2005 to 2 November 2006) and feedback is excellent. Television programmes, such as BBC 1's 'Who do you think you are?', have raised the profile of family history and other record-based research, encouraging members of the public to use online and other primary sources in greater numbers. There is an increasing demand for user friendly research sites, such as ours. In addition to its value for members of the Inn, there is no doubt that the internet-based database is helping to promote a positive image of the Inn to the outside world. Indeed, it is so useful that we have begun to extend it from 1851 to about 1920. In the absence of additional HLF money, the Inn plans to fund the database extension itself, taking in some of our most famous members: Mahatma Gandhi, Jawaharlal Nehru and W S Gilbert. Watch this space!

LIBRARY NEWS

SATURDAY OPENING

CALENDAR JANUARY - JULY 2007

JANUARY

6 January Lincoln's Inn
 13 January Middle Temple
 20 January Gray's Inn
27 January Inner Temple

FEBRUARY

3 February Lincoln's Inn
 10 February Middle Temple
 17 February Gray's Inn
24 February Inner Temple

MARCH

3 March Lincoln's Inn
 10 March Middle Temple
 17 March Gray's Inn
24 March Inner Temple
 31 March Lincoln's Inn

APRIL

7 April CLOSED
 14 April Middle Temple
 21 April Gray's Inn
28 April Inner Temple

MAY

5 May Lincoln's Inn
 12 May Middle Temple
 19 May Gray's Inn
 26 May CLOSED

JUNE

2 June Inner Temple
 9 June Lincoln's Inn
 16 June Middle Temple
 23 June Gray's Inn
30 June Inner Temple

JULY

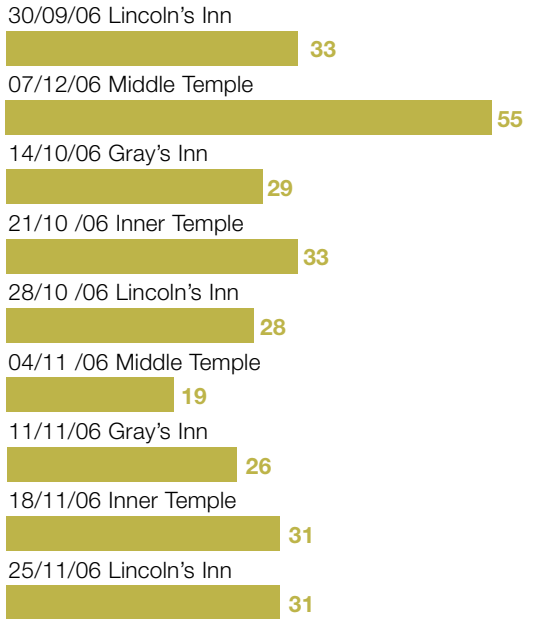
7 July Lincoln's Inn
 14 July Middle Temple
 21 July Gray's Inn
28 July Inner Temple

OPENING HOURS: 10.00AM – 5.00PM

SATURDAY STATISTICS

TOTAL VISITORS

SEPTEMBER 2006 - NOVEMBER 2006



TRACEY DENNIS

rejoined Inner Temple Library in November 2006 as Deputy Librarian after being away from the Inn for eight years. Since her employment as an Assistant Librarian between 1994-1998, Tracey has worked at Lewis Silkin Solicitors as Head of the Library and Research Centre. Tracey will be writing a fuller account of her experiences both inside and outside the Inner Temple in the next edition of the Library's electronic newsletter which will be distributed in January 2007.

THE BAR MUSICAL SOCIETY

The Inns of Court have always had strong musical traditions. In the 16th and 17th Centuries their musical entertainments were lavish and a significant part of the cultural life of the Inns. The Bar Musical Society was founded in 1952, by Deborah Rowland, in order to foster these traditions and to bring leading musicians of the time to the Inns. After more than 50 years the Bar Musical Society continues to exist as an important part of the cultural life of the Inns of Court. The Patron of the Society from its foundation 1952, was Her Majesty Queen Elizabeth the Queen Mother. Since her death in 2002, at the tender age of 101, the Society has been very fortunate to have the continued support of its President, the Rt Hon Sir Anthony Evans, who succeeded the late Lord Taylor of Gosforth, himself a highly accomplished pianist, often heard at the Society's Members' concerts.

In the past, with the assistance of our Founder, the Society was able to engage the leading musicians of the day, including such names as Sir John Barbirolli, Sir Thomas Beecham, Artur Schnabel, Yehudi Menuhin, Louis Kentner, Kiri te Kanawa. The Chelsea Opera Group, who had often appeared at the Society's concerts under their conductor Sir



Colin Davis, were most recently heard at the Society's 50th Anniversary concert in 2004.

In recent years, with the enormous amount of musical talent coming out of the music schools, the Society has concentrated more on engaging today's rising young musicians, often before they have become as well known as they are now. A few examples are the Belcea Quartet (until recently resident string quartet at the Wigmore Hall), Kate Royal (2004 winner of the Kathleen Ferrier Prize), Alice Neary (cello), and Ingrid Andsnes (Piano). Some concerts have featured young musicians supported by the Countess of Munster Trust. Our next concert, on 7 November 2007 at the Great Hall of Lincoln's Inn, will provide an opportunity to hear the rising young violinist Thomas Gould, who is supported by the Trust.

From time to time the Society combines with other organisations, such as the Anglo-Netherlands Society and Lawyers' Music, to promote concerts in the Inns of Court. On 27 February 2007 we will again be joining with Lawyers' Music for a choral and orchestral Bach concert in the Temple Church, at which it will be possible for the Society's Members to participate.

Today, in spite of increasing competition – from other musical events organised from time to time in each of the four Inns as well as the abundance of events for which London is famous – the Society continues to flourish, presenting three or four concerts each year. In the past, there was generally a concert in each of the four Inns, one of which was often a



Alice Neary

Belcea Quartet (left)

Members' Concert, at which members of the Society and their friends and families provided musical entertainment of a very high quality. Participants in these concerts have included, in addition to our President Peter Taylor, musicians such as Lord Justices Carnwath (violin/viola) and Lloyd (harpsichord), Lord Justice Dyson and Judge Michael Harris (piano duo), Harvey McGregor QC, Michel Kallipetis QC, and Juliet Schiemann (soprano) and Jennifer Johnston (soprano) who, having left the Bar in favour of a musical career, reached the finals of the 2006 Kathleen Ferrier Competition. It is hoped that it will be possible to revive the Members' Concerts as a regular part of the Society's calendar.

Other future concerts will be held on 4 July 2007 (Gray's Inn) and 6 November 2007 (Lincoln's Inn). At the first of these we are expecting to be able to engage Jennifer Johnston.

In order to continue the work of the Bar Musical Society, of course it is essential to attract new members and in particular students and young barristers. Without new blood the Society would gradually wither. Membership is open to any member of an Inn of Court, and, in the Committee's flexible discretion, to others having some association with one of the Inns. The annual subscription is £20, and £10 for students and barristers of under two years' Call. Concessions for concert tickets are normally available to students and barristers of under five years' Call. Anyone interested in joining the Society is invited to write to one of the following:

The Secretary, Joseph Butler-Sloss, at 10 King's Bench Walk, Temple, London EC4Y 7ED;

The Treasurer, Leslie Wise at 10 King's Bench Walk, Temple, London EC4Y 7EB.

The Chairman, Christopher Morcom QC at Hogarth Chambers, 5 New Square, Lincoln's Inn, London WC2A 3RJ.

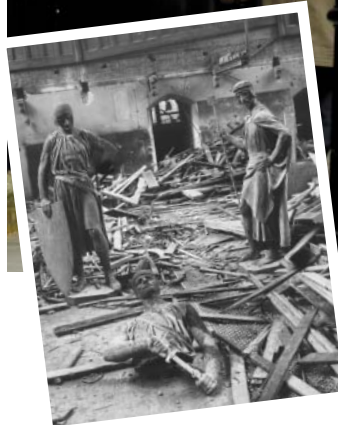


A COMMUNITY OF COMMUNITIES

Thank you to all those who have subscribed and/or have sent written contributions towards the publication of *A Community of Communities*, the 2008 anniversary book about the Inn, past and present. The complex process of compilation and editing is well under way, overseen by a diligent Editorial Board.

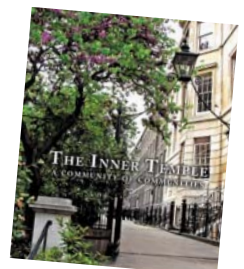
IT IS NOT TOO LATE TO SUBSCRIBE!

You can subscribe online at www.tmltd.com or by order form available from the Treasury Office. Subscribers will benefit from a substantial discount and have their names listed in the book as an enduring record of their support.



Join in and help us celebrate the 400th anniversary of James I's Charter to the Inner and Middle Temple!

The Inner Temple: A Community of Communities will be published in Autumn 2007.



EDUCATION & TRAINING DEPARTMENT

STAFF NEWS 2006

On 15 September Eamonn O'Reilly was married to Rachel Jones. We wish them both all the very best for the future.

On 14 September William Peter Freddie was born to Victoria Crook (former Assistant to the Head of Education and Training) and her husband Rick.

On 25 November Lina Phyllis was born to Zoë Waterfield and her husband Milo.

Congratulations to both sets of parents.



PUPILLAGE ADVICE EVENING

These give students the opportunity to talk informally to barristers on a one-to-one basis about different areas of law and to receive advice on applying for pupillage. The next Pupillage Advice Evening will be held on 28 March 2007 and is designed to help students with pupillage applications. If any barristers can spare an hour and a half (6pm - 7.30pm) to offer pupillage advice to students at the drinks reception on the above date, it would be greatly appreciated. Please contact Clare Heaton on 020 7797 8210 or email cheaton@innertemple.org.uk

DEBATING AND MOOTING SOCIETIES

The Inn's Intersarsity Debating & Mooting weekend will be held here at the Inn on 2 and 3 February (Debating) and Sunday 4 February (Mooting). As always, we need members to offer to help with judging at both events. If you can help, please contact Clare Heaton on 020 7797 8210 or email cheaton@innertemple.org.uk

BARRISTERS WE NEED YOUR HELP!

We have two Education Days coming up this year, Monday 26 February 2007 and Monday 26 March 2007. They are primarily for students studying the BVC at institutions outside London. Programmes involve talks with practitioners, mock trials and exercises on advocacy, discussion groups, demonstration

cases, and lectures given by leading legal names. Full attendance of each day is worth two Qualifying Sessions.

If any barristers would be willing to lend a hand, please contact Emma Walker on 020 7797 8213 or email ewalker@innertemple.org.uk

PEGASUS SCHOLARSHIPS

We had 24 applicants to the Pegasus scheme this year and the candidates will be interviewed and selected in late January. 2007's two American scholars are Lisa Marie Danish who works for the US Court of Appeals for the Fourth Circuit and Rebecca Raper who works for Fanning Harper & Martinson in Fort Worth.

They will be spending six weeks split between two sets of chambers, interspersed with visits and marshalling at courts in London, and a day at the House of Lords. They will also be attending the Cumberland Lodge weekend in March.

If you would like any further information on the scheme or copies of the reports written by last year's Scholars please contact Clare Heaton on 020 7797 8210, email pegasus@innertemple.org.uk or visit the Inner Temple website.

NEW PRACTITIONERS' ADVOCACY & ETHICS WEEKENDS

The Inn is running two residential NP Advocacy & Ethics Weekends on the 20-22 April and the 15-17 June 2007. Each weekend is accredited for 17 CPD hours, including the total advocacy and ethics NP requirement, and costs £225. One weekend will include witness handling using real doctors, the other using accountants. For further information or to request a booking form, please contact Beth Phillips on 020 7797 8209 or email bphillips@innertemple.org.uk

SERIOUS SEXUAL OFFENCES SEMINAR

The Inner Temple in conjunction with the Criminal Bar Association is organising a Serious Sexual Offences seminar to be held on Saturday 10 March 2007 with optional specialised advocacy training on the morning of Sunday 11 March 2007. This seminar has been accredited by the CPS and also for 6 CPD hours (and an extra 3 CPD hours if you complete the advocacy training). Sessions will cover:

- The Sexual Offences Act – three years on
- Problems in rape cases
- The effect of rape on victims
- Witness handling demonstration
- Section 41 demonstration
- Vulnerable witnesses
- Advocacy training with actors as witnesses (optional)

Places are limited and available on a first-come, first-served basis. The cost of the weekend is £125 (£145 if you also attend the Sunday session) and includes lunch. To book, or for further information, please contact Fiona Fulton on 020 7797 8171 or email ffulton@innertemple.org.uk

PUPIL SUPERVISOR BRIEFING SESSIONS 2007

Sessions to be held in London on:
 Monday 5 February at Middle Temple
 Monday 14 May at Inner Temple
 Wednesday 11 July at Gray's Inn
 Thursday 2 September at Lincoln's Inn.

To book on to a session or for more information on becoming a pupil supervisor, please contact Faye Appleton on 020 7797 8207 or email fappleton@innertemple.org.uk

EDUCATION & TRAINING DEPARTMENT

PLAY COUNSEL AND/OR WITNESS AND GAIN A QUALIFYING SESSION

We are seeking BVC students to play counsel and witness on training courses for advocacy trainers, and witnesses in mock trials for pupils. Each BVC student can gain up to 2 Qualifying Sessions in this way – 1 Qualifying Session for a day event and 1 Qualifying Session for 2 evening courses. Or you may simply wish to take advantage of the opportunity to gain more advocacy experience and work with senior members of the Inn. We are currently recruiting for the following dates in 2007:

20 February – Evening Mock Trial

21 February – Evening Mock Trial

22 February – Evening Mock Trial

To book your place or for further information, please call Emma Walker on 020 7797 8213/8209 or email ewalker@innertemple.org.uk

MOCK INTERVIEW SCHEME

The Mock Interview Scheme aims to help students develop their pupillage interview technique and build up confidence. This scheme is always very popular in March/April so we particularly need volunteers at that time of year. Mock interviews normally take approximately half an hour and a room can be provided at the Inn if necessary. If you are a barrister over three years' Call and are interested in helping, please contact Eamonn O'Reilly in the Education & Training Department on 020 7797 8211 or email eoireilly@innertemple.org.uk

INNER TEMPLE STUDENTS ASSOCIATION (ITSA)

ITSA held a very successful pub quiz evening in October and a Christmas carol evening in December in conjunction with the Drama Society ('Twas the week before Christmas'). They are hoping to hold a Valentine/Mardi Gras Ball in February so keep a lookout for notices which will be posted around the Inn.

ATTENTION INNER TEMPLE PUPILS!

If you have not yet notified the Inn of your pupillage, please do so immediately as you will need to complete the remaining compulsory advocacy course which begins at the end of January 2007! Failure to do so will result in you not being issued with a practising certificate.

The Inn will be holding a Refresher Evening (6.00-8.30pm) for pupils on Monday 19 March. This will be a final opportunity for you to practise your advocacy skills before embarking upon your 2nd six. If you would like to attend, please call Beth Phillips on 020 7797 8209 or email bphillips@innertemple.org.uk

DINNER TO THE UNIVERSITIES

The Inner Temple will be holding its annual Dinner to the Universities on the 20 March 2007. The aim of this dinner is to establish links with the undergraduates who are interested in coming to the Bar from Universities across the country. If you are a Barrister who would like to attend this dinner please contact Emma Walker on 020 7797 8213 or email ewalker@innertemple.org.uk

INNER TEMPLE IN MALAYSIA

An important and happy event for the Inn and our Malaysian members took place in Kuala Lumpur this September with the official launch of the Malaysia Inner Temple Alumni Association.

After months of planning, the Association came into being with a series of events attended by Master Butler-Sloss and the Sub-Treasurer, Patrick Maddams. A gala dinner on 15 September at the Royal Selangor Club was attended by more than 70 members and their spouses from all over Malaysia including Sabah and Sarawak. The British High Commissioner Mr Wiliam Boyd McCleary and his wife Jeanette were guests of honour along with the Director of the British Council Mr Gerry Liston.

Sadly the Association's Honorary President, Master Abdul Malek was unable to attend and the guests were welcomed by its Vice President Justice Dato James Foong Cheng Yuen.

Next day came the Association's inaugural AGM where officers were formally elected, its constitution approved, membership fee set and a programme of events and activities for the coming year established. The Association is formally registered with the Registrar of Societies, broadly similar to charitable status in UK.

This was followed by a legal lecture given by Master Butler-Sloss on recent developments in family law, and organised jointly with the Asean

Law Association of Malaysia (ALA). Our Association has already agreed that any Inner Temple member from any of the other countries represented by the ALA can join the Association. Besides Malaysia, the ALA covers Brunei, Cambodia, Indonesia, Laos, Philippines, Vietnam, Singapore and Thailand. (www.aseanlawassociation.org)

Finally, Master Butler-Sloss and representatives of the Association were received by the Chief Justice of Malaysia, the Rt Hon Justice Tun Dato' Seri Ahmad Fairuz bin Dato' Sheikh Abdul Halim in the wonderful surroundings of the new Federal Court complex in Putrajaya and which included visits to its library and museum displaying the constitutional development and legal history of the Federation.

All these events received wide publicity in the Malaysian press which also stressed that several eminent Malaysians are or have been members of Inner Temple including he first Paramount Ruler of Independent Malaya, His Majesty Tunku Abdul Rahman ibni Al-Marhum Tuanku Muhammad, the first Prime Minister of Independent Malaya, Tunku Abdul Rahman Putra Al Haj ibni Al Marhum Sultan Abdul Hamid Halim Shah and the first Malaysian to hold the post of Chief Justice, Tun Syed Sheh Barakbah.

Any reader of Innerview who might wish to get in touch with the Association is invited to contact its Hon Secretary Mr Radhakrishnan at radhakrishnan@shearndelamore.com

GROUP LEADERS NEEDED

**CUMBERLAND LODGE WEEKEND, 9TH-11TH
MARCH 2007 "SPORTS LAW"**

If you are a Barrister who is seven or more years' Call and have an interest in this topic then we need your help as a Group Leader. To volunteer or for additional information, please contact Faye Appleton on 020 7797 8207 or fappleton@innertemple.org.uk
The weekend counts as 9.5 CPD hours.

MARSHALLING SCHEME

As a result of its increasing popularity, we are constantly looking for Judges to take part in the Marshalling scheme.

If you are a judge who would like to volunteer to take marshals or a student / pupil who would like to marshal – then please contact Emma Walker on 020 7797 8213 or email ewalker@innertemple.org.uk

INNER TEMPLE LECTURE SERIES 2007 “DIFFERENT ASPECTS OF THE LAW”

26 FEBRUARY 2007

MASTER SCHIEMANN: “THE IMPACT OF EUROPEAN LAW ON ENGLISH LAW”

COUNTS AS
1 HOUR
OF CPD!



26 MARCH 2007

MASTER WILLBOURNE: “MARRIAGE... , BUT NOT AS WE KNOW IT”

Drinks for Benchers in the Smoking
Room at 6pm

Lecture/Debate 6.30 – 7.30pm

Drinks reception 7.30 – 8.30pm

Cost £11.50 for barristers, £6.50 for students

Drinks for Benchers in the Smoking
Room at 6pm

Lecture/Debate 6.30 – 7.30pm

Drinks reception 7.30 – 8.30pm

Cost £11.50 for barristers, £6.50 for students

COUNTS AS
1 HOUR
OF CPD!



TO BOOK

Tel 020 7797 8250

Fax 020 7797 8178

Email

jfenton@innertemple.org.uk

FOR FURTHER INFORMATION

On both lectures please contact
Beth Phillips in the Education &
Training Department on 020 7797
8209 or email
bphillips@innertemple.org.uk

TEMPLE MUSIC FOUNDATION

THE FEBRUARY CHOIR CONCERT

Wednesday 28 February 2007, 6.45pm
Temple Church

To include works
by Gabriel Fauré

TEMPLE CANTATA

Thursday 15 March 2007, 6.45pm
Temple Church

The Voice of the Bass!
To include works by JS Bach

Tickets £15 & £10 can be
booked on line
www.templemusic.org

or by post to
The Temple Music Foundation
The Master's House
Temple Church
London EC4Y 7BB
Information 020 7427 5641 or
development@templechurch.com

THE TEMPLE CHURCH

EVENTS 2007



SUNDAY 7 JANUARY 11.15 am

CHORAL MATTINS

The First Service of the New Year

THURSDAY 1 FEBRUARY 5.45 pm

CHORAL EVENSONG

The Presentation in the Temple

SUNDAY 11 FEBRUARY 11.15 am

CHORAL MATTINS

Preacher: The Rt Revd Bishop Bob Hardy
Followed by a Congregational Lunch in Middle Temple Hall

WEDNESDAY 21 FEBRUARY 5.45 pm

CHORAL EVENSONG

Ash Wednesday

SUNDAY 25 FEBRUARY 11.15 am

CHORAL COMMUNION

Preacher: The Revd Caroline Clarke
Followed by Term Sunday Lunch in Middle Temple Hall

SUNDAY 4 MARCH 11.15 am

CHORAL MATTINS

Followed by Term Sunday Lunch in Inner Temple Hall

SUNDAY 18 MARCH 11.15 am

CHORAL MATTINS

A Service to celebrate Marriages conducted in the Temple Church followed by lunch in Inner Temple Hall

SUNDAY 25 MARCH 11.15 am

CHORAL COMMUNION

Followed by Term Sunday Lunch in Middle Temple Hall

SUNDAY 25 MARCH 2.30 pm

CHILDREN'S EASTER PLAY

Followed by Easter Egg Hunt and Family Tea in Inner Temple

1-8 APRIL

From Palm Sunday to Easter

TEMPLE CHURCH SERVICES AND MUSIC

Julius Drake and Friends



Tuesday 16 January 2007

Philip Langridge
Iestyn Davies

Wednesday 14 February 2007

St Valentine's Day concert

Ailish Tynan

Christine Rice

James Gilchrist

Christopher Maltman

Tuesday 6 March 2007

Sir Willard White

Tuesday 24 April 2007

Mark Padmore

Thursday 10 May 2007

Christianne Stotijn

Stefan Loges

Monday 21 May 2007

Amanda Roocroft

Tuesday 19 June 2007

Jonathan Lemalu

In the second Song Series in Middle Temple Hall, the pianist Julius Drake has again gathered together an outstanding collection of recitalists including some of the most distinguished singers and specialists of the repertoire.

7.30pm Middle Temple Hall,
Fleet Street, EC4Y 9AT

CONCERT TICKETS

£50, £35, £25, £10/£5 with student ID.
10% discount for full concert series bookings.
Tickets prices include interval drink where applicable. Unreserved seating in each section.
Post concert champagne reception: £25
www.barbican.org.uk
(24 hours, reduced booking fee)
0845 120 7543 (booking fee)

GENERAL INFORMATION AND BOOKING

www.temple-song.com or contact
Penny Jonas Telephone: 07778 799842
or email penny@templechurch.com

‘Julius Drake, the mastermind behind this series... combines sensitiveness to his singer's needs and exquisite touch in his own solo moments...’
The Observer

DIARY

HILARY TERM 2007

JANUARY

- 3 Treasury Office Opens
- 7 Choral Mattins in the Temple Church:
First Service of the New Year
- 8 Hall Opens
- 10 New Advocacy Teacher Training Evening
- 11 Hilary Law Sittings Begin New Advocacy
Teacher Training Evening**
Treasurer's Reception for Benchers
- 13 Advocacy Teacher Grading Day
- 15 Cumberland Lodge Sub-Committee
- 16 Pupils' Advocacy Introductory Evening
BVC Scholarships & Exhibitions
Sifting Panel
- 17 Education & Training Committee
- 18 Investment Sub-Committee
- 22 Bar Liaison Committee**
Sponsors' Dining Night
- 23 Executive Committee
Pegasus Scholarships Interviews
Pupils' Case Analysis Session
- 24 Council of the Inns of Court (GI)
Pegasus Scholarships Interviews
- 25 Pension Scheme Trustees
- 26-28 Latimer House Pupils' Advocacy
Weekend
- 29 Pupils' & Students' Affairs Sub-
Committee**
Mixed Dining Night

FEBRUARY

- 1 Bench Table followed by
Dinner for Benchers**
The Presentation in the Temple:
Choral Evensong in the Temple Church
- 2-4 Intervarsity Debating and Mooting
Competitions
Highgate House Weekend
- 6 Estates Committee
- 7 Books Sub-Committee
- 9 Hall and Circuit Dinner – Bar Mess**
- 10 Pupils' Advocacy Applications Day
- 11 Choral Mattins in the Temple Church
followed by a Congregational Lunch in
Middle Temple Hall
- 14 Library Committee**
Church Committee (MT)
Private Guest Night
- 17 Pupils' Advocacy Applications Day
- 19 Advocacy Training Committee

- 21 Jamestown Lecture at Middle Temple
Ash Wednesday: Choral Evensong in the
Temple Church
- 22 Circuit Committee**
Benchers' Night
- 24 BVC Scholarships & Exhibitions Interviews
- 25 Pupils' Practice Management Course
- 26 Bar Liaison Committee**
Education Day and Lecture Night
(Master Schiemann)
- 27 Executive Committee
- 28 Council of the Inns of Court (IT)

MARCH

- 1 Bench Table (Proposal Day)
- 2 Ordinary Dining Night (Student Guest
Night) with entertainments after dinner**
- 3 Ordinary Dining Night (Student Guest
Night) with entertainments after dinner**
BVC Scholarships & Exhibitions Interviews
- 4 Term Sunday Lunch**
- 8 Hilary Term Call Night**
- 9-11 Cumberland Lodge Weekend
- 10-11 Advanced Advocacy Training Weekend
(Serious Sexual Offences)
- 12 Sponsors' Dining Night**
- 13 Estates Committee
- 14 Education & Training Committee
- 19 Pupils' Refresher Evening
- 20 Dinner to the Universities**
- 25 Children's Easter Play in the Temple
Church followed by the Easter Egg
Hunt and Family Tea**
- 26 Education Day and Lecture Night**
(Master Willbourne)
- 28 Pupillage Advice Evening
Pension Scheme Trustees
- 29 Bench Table

APRIL

- 1-8 From Palm Sunday to Easter:
Temple Church Services & Music
- 2 Bar Liaison Committee
- 3 Executive Committee
- 4 Council of the Inns of Court (LI)
Books Sub-Committee
Hilary Law Sittings End
- 5 Hall Closes



CAR PARK CHANGES FOR 2007

PROCEDURES FOR BOOKING

MASTERS OF THE BENCH:

- Private Guest Nights: sign in and give the name of your guest in the special Private Guest Night book. Contact: **Kate Peters**
- Call Nights: contact **Emma Walker**
- Sunday Lunches not in Term: sign in the Sunday Lunch Book in the Smoking Room or contact the **Catering Department**
- All other Dining Nights and Term Sunday Lunches: sign in the Diary in the Smoking Room by 4.00pm on the day or contact **Kate Peters**

MEMBERS OF HALL:

- Private Guest Nights: **Kate Peters**
- Call Nights: **Emma Walker**
- Sunday Lunches not in Term: **Catering Department.**
- All other Dining Nights and Term Sunday Lunches: **Jacqueline Fenton**
- All special dinners (e.g. Bar Guest Night, Bar Mess): **Kate Peters**

STUDENTS:

- Complete and return the application form or contact **Jacqueline Fenton**

IT'S ALL CHANGE IN THE CAR PARK THIS YEAR!

New charges apply from 1 January 2007
All prices include VAT

ANNUAL PERMITS

- Chambers Permit **£2,250**
- Members Permit **£2,060**
- Residents Permit **£1,000**
- Motorbike Permit **£300**

DAILY PERMITS

purchased after the day of parking **£25**

DAILY PERMITS

purchased on or prior to the day of parking will receive a discounted rate **£22**

HALF DAY PERMITS

these can only be purchased on or prior to the day of parking **£13**

NO PERMIT?

If you do not purchase a permit you will be charged for a full day **£25**

The Treasury Office is open for parking permit sales from 9am – 5pm, if the door is closed please ring the bell. Permits can also be purchased over the phone on 020 7797 8250 or by email carpark@innertemple.org.uk.

CONTACTS

Kate Peters 020 7797 8250

kpeters@innertemple.org.uk

Jacqueline Fenton 020 7797 8250

jfenton@innertemple.org.uk

Emma Walker 020 7797 8213

ewalker@innertemple.org.uk

Catering Department 020 7797 8230

catering@innertemple.org.uk



STAFF NEWS

MARTINE DAVIES

The Inn says a fond farewell to Martine Davies. Martine has been the Assistant to the Deputy Sub-Treasurer for the last three years and has been a huge asset to the Treasury Office, she will be greatly missed and we wish her every success in her future role.



BETH PHILLIPS

The Inn is delighted to announce the appointment of Beth Phillips as Further Education Officer. Beth joined the Inn three years ago as Further Education Assistant. She took up her new post in September, succeeding Fiona Fulton who has been appointed as Head of Education and Training. We wish Beth every success in her new role.



EMMA WALKER

has joined the Education & Training Department, replacing Beth Phillips in the role of Further Education Assistant. Emma has previously worked in the Education/ not-for-profit sector in Yorkshire.



NNEKA IKEOGU

has joined the Education & Training Department from the Education Department at Leeds City Council and is currently studying for a Master's degree in Education. Nneka is covering Zoë Waterfield's maternity leave.





Pegasus

Begin the New Year with some of our new menus at Pegasus, we have everything you will need throughout your day.

Start with a good breakfast, 8.30-11am, our delicious lunch is served 12-2.30pm, or for those of you pushed for time, our new late lunch menu, 2.30-5pm and finally round off the day with either a relaxing glass of wine or one of our exciting new cocktails. Feeling peckish? Our tasty snack menu is served from 5-9pm.

Take away coffees are served all day.



Contact us on 020 7797 8234

or email

pegasusbar@innertemple.org.uk

Open 8.30am until 9.30pm Monday to Friday

Pegasus Bar & Restaurant

Inner Temple

London

EC4Y 7HL



CHAUCER

BOSWELL

The Boswell
and
Chaucer Rooms
Top floor
3 Dr Johnson's Buildings

Room rate £117.50.

To book a room or for more information contact the
Catering Department on 020 7797 8230 or email
catering@innertemple.org.uk or www.innertemplecatering.org.uk

Inner Temple

Overnight Accommodation

