



INNERVIEW

Newsletter of The Inner Temple

Michaelmas 2022



An Inspirational Summer



facebook.com/TheInnerTemple



twitter.com/@TheInnerTemple

Michaelmas 2022

As we all return for a new Michaelmas term, the long summer heatwave seems an age ago, the lawn has become green again, and there is the beginning of an autumnal chill in the early mornings and evenings.

This autumn the Inn hosts Part II of the Inns of Court College of Advocacy (ICCA) Bar Course for the first time. Two Introductory evenings for students studying in and outside London were held this week, with students showing great enthusiasm for the Inn on seeing it for the first time. There was great praise for the facilities in the auditorium and breakout rooms, and for the range of opportunities which the Inn has to offer over and above Qualifying Sessions. Drama and Mooting Societies, the Library, and the Circuits were among the stalls providing information at the careers fair layout, all receiving many visitors. I suspect I inadvertently roped myself in for an appearance in the Christmas Pantomime. Oh yes, I did!

We were all deeply saddened by the death of Her Majesty Queen Elizabeth II. This week the First Choral Evensong of the legal year in the Temple Church will be a service in her memory, once again reinforcing the pivotal role the Church plays in our legal community in bringing us all together at important moments in our lives. The death of Her Majesty the Late Queen meant that the Joint Amity Visit to Washington and the Treasurer's subsequent visit to four jurisdictions in the Caribbean had to be cancelled. After careful deliberation we decided that it would have been inappropriate to continue with an official visit by the Inn during a period encompassing national mourning and the funeral itself. The British Embassy in Washington and the High Commissions in the Caribbean were of the same mind and were no longer entertaining during this period. Though disappointing, especially after so much work had gone into planning the visits, cancellation was the right course of action. Organisers and those we were meeting in Washington and the American Inns of Court were entirely supportive of the decision, as were our contacts in the Caribbean.

Those who had already travelled and those who chose to still travel were assisted by the Inn, Gray's Inn, and the American Inns of Court to take part in some of the events which still took place. I expressed my thanks on behalf of the Inn to the AIC for the assistance they gave and am delighted to be able to return their hospitality on their visit to London this week for a programme of professional, educational and social events, a timely opportunity to recapture reciprocal Amity and hospitality. I will be going to Washington with the Sub-Treasurer at the end of October to the AIC Celebration of Excellence instead of the Amity visit and look forward to representing the Inn rather later in the year than anticipated. It is not possible to reorganise the Caribbean visit this year. Most of the planned events were cancelled, but I honoured the commitment to give a presentation on Ethics at the Bar as part of the induction day for new students at the Norman Manley Law School in Jamaica by Zoom rather than in person.

This autumn will also involve the recruitment of a new Director of Education following Struan Campbell's decision to live in the Netherlands. He leaves at the end of December. The Inn is very grateful for all that Struan has done in his role as Director. He has done an admirable job in directing and supporting the Education and Training Department during a period of great change, not only in the delivery and restructuring of its educational programmes but also while Fiona Bartlett, former Director of Education, underwent serious medical treatment, eventually taking over from her when she was no longer able to work. I should like to pay public tribute to them both for their work over recent years in transforming the Inn's educational work in line with the Bar Standards Board Memorandum of Understanding to deliver the new framework of qualifying sessions and educational activities. Struan has been key in restructuring the department to fulfil the Inn's objectives as envisaged in the Strategic Review of 2015 (add link) and leaves behind a legacy of high standards in all aspects of the work of the Education and Training department. The Inn has received over 100 applications for the position of Director of Education, a reflection of the

importance and responsibility of the role. The shortlisting and selection process has already begun.

Thanks to the detailed work of a working group of the EDI Sub-Committee, a profession specific EDI Training Course has been rolled out to all the Inn's advocacy trainers. Over the coming weeks, the course will be sent to members of the Executive Committee, Bar Liaison Committee, all other Education and Training volunteers and members of the Inn's committees. In keeping with the requirements of the Inn's Volunteer and Participant Code of Conduct, the course is mandatory for all who take part in the Inn's governance and volunteering opportunities and I urge you to sign up to the course when you receive your invitation.

We are delighted at last to have a full complement of Catering staff in post again, some new and some familiar, to support the Inn's expanded educational programme, the ICCA Bar Course, and all our collegiate activities, not least lunch in Hall. Many of us have been enjoying the gastronomic creativity of Executive Chef Robbie Lamb and his team and have seen the return of some firm favourites such as traditional Friday fish and chips. One of our American visitors this week declared the Raspberry Queen of Puddings the best dessert she had ever tasted. High praise indeed! Hall

lunches are an ideal way of meeting friends and colleagues from the profession. It is gratifying to see Hall itself filling up, with several sets and committee chairs making use of the facility again. And, as a reminder to our students – you are entitled to 25% off food in Hall and the Pegasus Bar. I hope to see this continue, with a greater attendance by Benchers on High Table in the future.

It is extraordinary how quickly the year passes. 2022 has been a momentous year for the Inn. The re-opening of the Treasury Building with our new and excellent facilities has coincided with the new Bar Course and additional educational and professional programmes. More dinners and a Bench Table have been held on the Circuits, and I hope that this will continue in years to come. More Benchers have been appointed from the Circuits, providing increased involvement and a welcome different perspective. I have certainly enjoyed meeting members on circuit and welcoming you to the Inn.

There are still many exciting events to come in this last third of the year, including Grand Day, 1920s-themed to reflect the 100th anniversary of the Call of the first women to the Bar. I look forward to seeing many of you in the remaining months of my tenure as Treasurer.

Her Honour Judge Deborah Taylor
Treasurer

Contents

Announcements	5
Recent Events	6
Social Context of the Law	11
COIC Matched Funding	12
Education & Training	14
Garden	20
Library	22
History Society	23
William Charles Niblett: A Life Re-Examined	24
Celebrating the life of Elizabeth Lane	26
Reader's Lecture Nights	27
Temple Church	29
Staff News	31
Come and Sing!	34
Bar Lawn Tennis Society	35
Diary	36

INNERVIEW

Editors:

Henrietta Amodio
and Kate Peters

Front Cover:
Photo by Paul Clark

INNER TEMPLE'S GOT TALENT
TUESDAY 25 OCTOBER

IT'S BACK!

SHOWCASE YOUR TALENT
AT THE INNER TEMPLE'S GOT TALENT
CABARET EVENING!



An evening of top quality entertainment on 25 October when members can perform and show off their talent. There's no judging, just a fun filled evening of entertainment.

If you are interested in taking part, please contact the Members Events Team on members@innertemple.org.uk

Tickets: £15

(ticket price includes light sandwich supper,
wine and soft drinks)

To book

innertemple.org.uk/itgt

Announcements

Master Michelle Corbett (Her Honour Judge Corbett) has appointed to be a Senior Circuit Judge, Designated Family Judge based at West London Family Court, with effect from 1 August 2022.

Master Nicholas Lavender has stepped down as the Northern Circuit Presiding Judge at the end of his three year appointment.

Master Timothy Le Cocq (Sir Timothy Le Cocq KC) The Baliff of Jersey, received a knighthood in the Queen's Birthday Honours List for his services to the community.

His Honour Judge Jonathan Salmon has been appointed as the Designated Civil Judge for Worcester with effect from 5 September 2022.

Master Michael Simon (His Honour Judge Michael Simon) has been appointed as the Resident Judge at Luton Crown Court with effect from 2 August 2022.

The Treasurer (Her Honour Judge Deborah Taylor) has been appointed as the Chair of the Medical Practitioners Tribunal Service (MPTS), with effect from March 2023.

READER-ELECT FOR 2023

Master Richard Salter
(Richard Salter KC) has been elected Reader-Elect for 2023.

New Benchers

We are delighted to announce that the following have been elected as Masters of the Bench of the Inner Temple:

Governing Bencher Elections 2022

Listed in order of Bencher status and by Call

BARRISTER GOVERNING BENCHER

Caroline Goodwin KC
Christine Agnew KC
Heidi Stonecliffe KC
Samantha Hillas KC
Sophie Cartwright KC
Dr Oliver Lewis

John Mehrzad KC
Thomas Dyke
Austin Stoton
Fallon Alexis
Rehana Popal

JUDICIAL GOVERNING BENCHERS

His Honour Judge Dennis Watson KC
Her Honour Judge Dafna Spiro
Judge Mark Sutherland Williams
His Honour Judge Geoffrey Payne
His Honour Judge Robert Lazarus

For our full list of announcements, go to
innertemple.org.uk/news/judicial-appointments

Recent Events

Social Context of the Law Series

13 June

Asylum and Immigration:
Do Sovereign Island Nations
have a Duty to Provide Refuge?

Our thanks to Master Robert Buckland, Master Rehana Popal (33 Bedford Row), Anthony Vaughan (Doughty Street), and to moderator Master Geoffrey Nice for their thought provoking panel discussion. Available to watch innertemple.org.uk/internationalconflict



Grand Day

15 June

Hosted by Master
Guy Fetherstonhaugh
(2020/21 Treasurer)



London Legal Walk

28 June

Well done to the team!



Inns of Court Alliance for Women Garden Party

20 June



Our thanks to Baroness Helena Kennedy for her passionate and inspiring speech about the importance of women's influence in maintaining the rule of law in this age of populist politics. We were honoured by the presence of several female Afghan judges who generously shared their stories and welcomed the opportunity to network.





Temple Big Picnic 3 July



Summer Party 13 July



Social Context of the Law

21 NOVEMBER 2022

Is it Better to Review or Monitor Terror Laws? The UK and Australian Positions Compared

Jonathan Hall KC

6KBW, Independent Reviewer of Terrorism
Legislation

Professor James Renwick CSC SC

Former Independent National Security Legislation
Monitor of Australia, and Honorary Professor of Law
at the Australian National University

Moderator:

Rory Phillips KC

3VB, Inner Temple Bencher

TO BOOK

innertemple.org.uk/terrorlaws

COST

In person £11.75
IT Students: £7
Online: £7

ENQUIRIES

members@innertemple.org.uk
020 7797 8250

WHERE

In-person and livestreamed from The Inner Temple

WHEN

Lecture: 6pm – 7.30pm (GMT+1:00)

Equivalent to 1hr CPD



The Council
of the Inns
of Court



Mrs Justice Lieven
Chair, COIC Pupillage
Matched Funding
Grants Committee

COIC Matched Funding

COIC welcomes applications for matched funding for 2023-2024 and 2024-2025 pupillages.

The COIC Pupillage Matched Funded Scheme (PMF) helps provide additional pupillages in Chambers, and other approved training organisations, predominantly engaged in legally aided work. Encouragingly, a growing number of Chambers are applying for COIC matched funded grants. COIC is set to support 34 pupillages in 2022. This is an impressive improvement on the scheme's first year of operation in 2014, when it supported 14 pupillages.

How the Scheme Works

It is a prerequisite of the scheme that chambers understand that matched funded pupillages are in addition to those they would have offered in any event. COIC match pupillage funding already provided by chambers with a total grant of £9,650 for 2023-2024 London pupillages and £8,250 for 2023-2024 out of London pupillages and, £10,000 for 2024-25 London pupillages and £8,550 for 2024-25 out of London pupillages, to fund the first six months of a second pupillage. Chambers are responsible for ensuring that the total pupillage award meets the BSB's minimum award for the year in question.

How to Apply

Applications to match fund 2023-2024 and 2024-2025 pupillages are invited between 5 September and 21 October 2022. Decisions will be communicated during the week commencing 7 November 2022. Online applications can be made at www.coic.org.uk/pupillage-matched-funding

To find out more please email Hayley Dawes at COIC on hdawes@coic.org.uk

Testimonials

Bank House Chambers

As the only independent set in Sheffield, we have been using the COIC matched funding scheme for a number of years and have found it hugely beneficial for all in Chambers.

As a Chambers completing mainly publicly funded work, in particular crime and family, we've always had more than enough work for our members and pupils. The difficulty has been in justifying the outlay to recruit and train multiple pupils in any given year given our relative size.

Matched funding has meant that we have been able to grow our team from the junior end organically over a number of years. This has had the effect of spurring everyone else in Chambers onto bigger and better cases, as those more junior are nipping at their heels. This has continued to repeat itself year on year: our original matched funding pupils are now established and valued tenants as they've moved up the ladder, and are now assisting the new pupils as they prepare to take on their first cases.

Pupillage can be a difficult year. We have always made it clear that our pupils are not in competition with each other. In this way, the pupils have an additional ally in their co-pupil(s), who know exactly what they are going through at that time – and we have certainly seen within Chambers how invaluable those relationships can be as they forge successful careers together.

All of this simply wouldn't have been possible without the COIC scheme, so we have much to be grateful for.

Chris Aspinall
Bank House Chambers – Pupillage AETO



Devon Chambers

Pupillage is at the heart of Devon Chambers. As a comparatively small set on the Western Circuit, we understand the importance of recruitment and the benefits for both the pupil and the Chambers from investing in the pupillage system.

The COIC Pupillage Matched Funding Scheme has allowed us to extend that opportunity to more pupils. Over the course of the last 4 years, we have been able to take 7 pupils in Chambers, all of whom have successfully completed pupillage and taken up offers of tenancy within Chambers. This has had an obvious benefit to Chambers but, importantly, it has generated huge benefits for the pupils themselves.

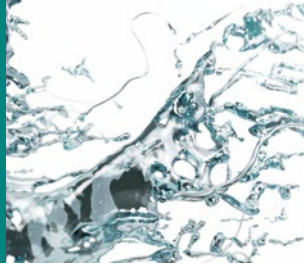
The size of Chambers has meant that, without the generous support of the Pupillage Matched Funding Scheme, we would often have to offer only 1 pupillage each year; the ability to offer 2 enhances the companionship and collegiality available to our pupils.

Together with fair recruitment, funded mini-pupillages, the Devon Chambers Student Forum and the Devon Chambers' 'Boot Camp' scheme, the Pupillage Matched Funding Scheme plays an integral part in our progressive approach towards training the next generation of barristers.

Amy Edinborough
Pupillage Coordinator, Devon Chambers



Education & Training



Journey

It has been a privilege to be Director of Education and lead the department through all the recent changes. I will be leaving the Inn at the end of the term, as I am moving to the Netherlands. Recruitment for a new Director of Education is now underway. This article will bring you up to speed with some of the changes we have made to the department.

To ensure the department is ready to meet the future ambitions of the Inn, the department has undertaken a reorganisation of the teams and expanded the number of staff. By the end of 2022 there will be 14 staff supporting the Inn's Education and Training activities. The department staff work closely with each other and within specific groups that reflect the journey of becoming and being a barrister, these are:

- Outreach and Scholarships
- Pre-Pupillage
- Student Societies and Call to the Bar
- Pupils and Practitioners



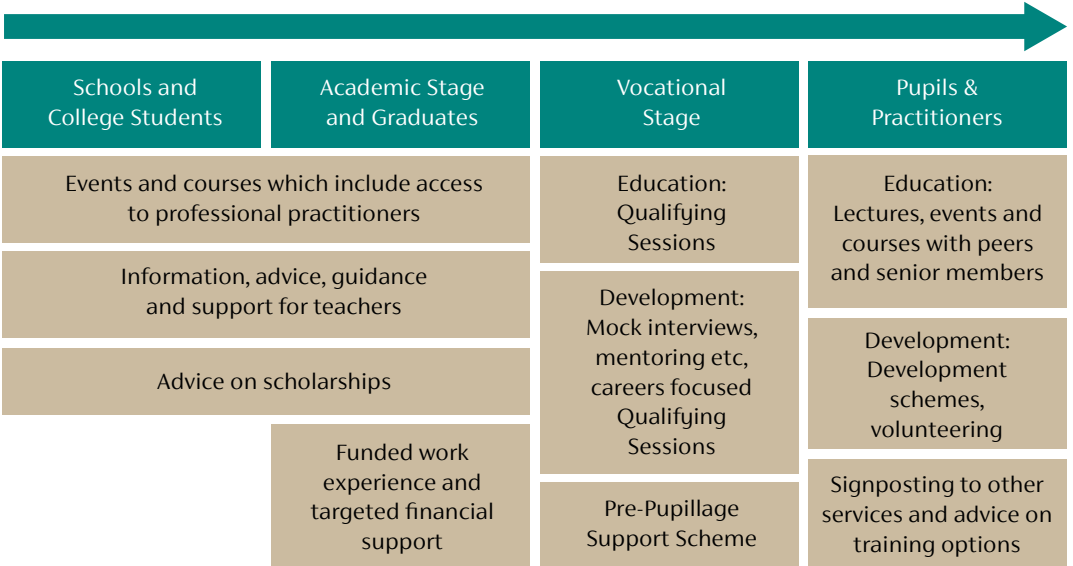
Struan Campbell,
Director of Education

This is underpinned by an operations and projects team to help make sure the department is as effective as possible.

The department activities are overseen by Education and Training Committee. There are also four committees overseeing the teams to reflect our four main areas of work: These are the Outreach and Scholarships Committee, Qualifying Sessions Committee, Advocacy Training Committee and Student Support and Engagement Committee. Outside of this, we have team members who report to the Pegasus Trust and Marshall Hall Trust.

In the following pages you can find out more about the activities the team support and how they can help you.

The Inn's education activities can be broken down into the following areas:



Operations and Projects



Richard Loveridge
Education Operations
and Project Manager

What we do and who we can help

- Other colleagues who have operational support questions
- New Volunteers
- People who are being called to the Bar
- Student Societies and Associations

Activities include:

- Call to the Bar
- Student Societies
- Compliance and regulatory matters
- Office Management
- Education Systems and Data Management Research
- Pupils and Practitioners



Tiffany-Rochelle Louis-Byfield
Education
Engagement
Co-Ordinator

Pupils and Practitioners



David Miller
Education
Programmes Manager
(Established
Practitioners)

What we do and who we can help

- Pupils
- New Practitioners
- Established Practitioners
- Graduates
- People looking to volunteer to deliver education and development support

Activities include:

- Pupils Advocacy Course
- New Practitioners Course
- Ethics training for Pupils and New Practitioners
- Early Years Careers Support
- Marshalling
- Advocacy Teacher Training



Vanessa Bennett
Education
Programmes Manager
(Pupils and New
Practitioners)



Mercy Quaynor
Education
Co-ordinator

Pre-Pupillage



Julia Armfield
Education
Programmes Manager
(Pre-Pupillage)



Kerry Upham
Regional Education
Officer



Helen Gaskell
Education and
Support
Co-ordinator

What we do and who we can help

- Student Members of the Inn
- Student Members who have been called but have yet to gain pupillage
- People looking to volunteer with student members of the Inn
- People looking for advice on running Qualifying Sessions

Activities include:

- Qualifying Sessions (for example: Circuit Education Days, Advocacy and Legal Research Days, EDI Series, Student Advocacy Residential Weekends, Ethics in Practice, Spotlight On, Reader's Lectures, Mooting Masterclass, Foundational Skills Course, Wellbeing at the Bar, Pupillage Advice, Pupillage Q&A and Introductory Evenings)
- Mentoring and Mock Interviews
- Pre-Pupillage Support Programme
- Quality Assurance of Qualifying Sessions

In the last academic year, the Inn ran **65 qualifying sessions events**. Students booked **5,402 places** at these events.

One Student's Feedback for our EDI: Disability at the Bar (online)
Thank you so much for putting on this incredible session. I'm incredibly glad I decided to join Inner Temple – I'm equally humbled and inspired by sessions you put on such as this. The speakers were incredible, it was an incredibly thought-provoking session and I've learnt so much. I feel privileged I got to be a part of it, thank you.

Outreach and Scholarships



Stephanie Baughen
Widening Access
Manager



Edwina Koroma
Access and Support
Officer



Georgina Everatt
Scholarships Manager



James Carlberg
Outreach
Co-Ordinator



Shahzadi Hussain
Pegasus Trust
Co-ordinator



What we do and who we can help

- Schools Students
- Parents
- University Student
- Graduates
- People looking to volunteer with schools or universities

Activities include:

- Dinner for Legal Academics and Dinner to the Universities
- Academic Fellows and Associate Fellows
- Supporting retention in the profession
- Insight Events
- In Focus
- Discovery Days for School Students
- Tours and talks
- Pegasus Access and Support Scheme
- Scholarships (Bar Course, GDL, Pupillage, Internship, Disability Awards)
- Pegasus Trust



Education & Training

We Need Your Help!

The education and training provided by The Inner Temple would not be possible without the support and commitment of members, who give up their time to support a wide range of activities including Outreach, Scholarships, Qualifying Sessions and training for pupils and barristers.

Volunteering can have a wide range of benefits including the following:

- Providing evidence of a commitment to the profession, which can help support

- Bencher, Judicial and KC applications
- Learning from junior members about their experiences
- Being part of the wider community of members who volunteer their time
- Helping to support The Inner Temple to develop and grow its education and training

Please find below some of the key activities which you can volunteer to support:

Outreach and Scholarships

Support for 12 to 18 year olds:

- Discovery Days for school students.

Support for people aged 18 years old and over:

- The Inn holds Insight Evening events during which attendees hear from, and network with, members of the profession
- The Inn stages an annual Dinner to the Universities event for those interested in a career at the Bar
- The Inn hosts training events for our PASS scholars and delivers talks at universities
- The Inn holds scholarships interviews for the Bar Course, GDL and Internship Awards
- The Inn facilitates an Ambassador Platform where current student members can share experiences with, and answer questions from, prospective students

Supporting Bar Course Students

The Inn supports Bar Course students throughout their studies by providing Qualifying Sessions on a number of different topics and themes. These sessions frequently require volunteers to do the following:

- speak at subject-specific panel sessions
- provide CV and application advice as part of workshop sessions
- provide advocacy training at civil and criminal advocacy sessions
- act as judges and group leaders at Student Advocacy Weekends

It is important that students are given frequent opportunities to speak and network with established members of the profession, so volunteers are needed not just to train students, but also to speak to them during formalised networking sessions. Qualifying Sessions are held in London, online and on Circuit.

Student and Pupil Support Schemes

The Inn provides additional guidance and advice to students and pupils via a range of Support Schemes, including the following:

- Mentoring and Mock Interview Support Schemes – In this role you would mentor a student member and conduct a mock pupillage interview with them
- Marshalling Scheme – In this role you would host student members for a period of marshalling in court (typically between one and five days)
- Pupils' Support Scheme – In this role you would provide mentoring and guidance to pupils as part of a 'buddy' system

The Inn is also looking for volunteers to support students in the following areas:

- Student Societies
- Call to the Bar interviews

Advocacy Training

Advocacy Trainers are established practitioners who are trained to teach advocacy at Pupil and New Practitioner courses held throughout the year at the Inn and at external venues. A potential trainer must attend a weekend training course, normally held in October.

International Activities

The Inn has an international membership and we aim to remain in contact with those based overseas. With this in mind, the Inn would like to hear from members who are interested in supporting international activities.

If you are interested to volunteering in any capacity, contact education@innertemple.org.uk or visit innertemple.org.uk/volunteering-opportunities

Contacts

DIRECTOR

Struan Campbell	Director of Education	scampbell@innertemple.org.uk	020 7797 8214
------------------------	-----------------------	--	---------------

OUTREACH AND SCHOLARSHIPS

Stephanie Baughen	Widening Access Manager	sbaughen@innertemple.org.uk	020 7797 8262
--------------------------	-------------------------	--	---------------

James Carlberg	Outreach Co-ordinator	jcarlberg@innertemple.org.uk	020 7797 8240
-----------------------	-----------------------	--	---------------

Edwina Koroma	Access and Support Officer	ekoroma@innertemple.org.uk	020 7797 8213
----------------------	----------------------------	--	---------------

Georgina Everatt	Scholarships Manager	geveratt@innertemple.org.uk	020 7797 8211
-------------------------	----------------------	--	---------------

Shahzadi Hussain	Pegasus Trust Co-ordinator	shussain@innertemple.org.uk	020 7797 8210
-------------------------	----------------------------	--	---------------

PRE-PUPILLAGE

Julia Armfield	Education Programmes Manager (Pre-Pupillage)	jarmfield@innertemple.org.uk	020 7797 8207
-----------------------	--	--	---------------

Kerry Upham	Regional Education Officer	kupham@innertemple.org.uk	020 7797 8189
--------------------	----------------------------	--	---------------

Helen Gaskell	Education and Student Support Co-ordinator	hgaskell@innertemple.org.uk	020 7797 2386
----------------------	--	--	---------------

PUPILS AND PRACTITIONERS

Vanessa Bennett	Programmes Manager (Pupils and New Practitioners)	vbennett@innertemple.org.uk	020 7797 8261
------------------------	---	--	---------------

David Miller	Education Programmes Manager (Established Practitioners)	dmiller@innertemple.org.uk	020 7797 8209
---------------------	--	--	---------------

Mercy Quaynor	Education Co-ordinator	mquaynor@innertemple.org.uk	020 7797 8253
----------------------	------------------------	--	---------------

OPERATIONS, CALL TO THE BAR AND STUDENT SOCIETIES

Richard Loveridge	Education Operations and Project Manager	rloveridge@innertemple.org.uk	020 7797 8212
--------------------------	--	--	---------------

Tiffany-Rochelle Lois-Byfield	Education Engagement Co-ordinator	tlouis-byfield@innertemple.org.uk	020 7797 8257
--------------------------------------	-----------------------------------	--	---------------

Garden



Miscanthus sinensis 'Rotsilber'
in a mixed border



Mellow Miscanthus

Sophie Tatzkow, Deputy Head Gardener

Find the return of our members to the Inn from their summer breaks also complements a noticeable change in the Garden. As we move to late summer, the borders exhibit richer colours of reds, dark yellows, and deep purples accented by the mellow hues of ornamental grasses. One of my favourite perennials is the ornamental grass *Miscanthus sinensis*, which currently takes a prominent role in the High Border.

The name *Miscanthus* comes from the Greek *mischos* meaning 'stalk' and *anthos* meaning 'flowers', referring to the tiny flowers on its dramatic plumes. Native to China, Japan, South Korea and Taiwan, '*sinensis*' means 'from China'. In Japan it is known as *susuki* and is considered an iconic plant of late summer and early autumn being used in decorative arts as well as a thatching material.

It was renowned German nurseryman, plant breeder and writer, Karl Foerster who started in the 1930s to work with ornamental grasses, including *Miscanthus*, at his nursery in Potsdam. Later in the 1950s, Ernst Pagels who had worked with Foerster, carried out intensive breeding of *Miscanthus* introducing many different cultivars of varying size and attributes.

The High Border displays a large collection of *Miscanthus sinensis* with 14 different varieties, many bred by Pagels. I love the excitement and surprise the different varieties deliver with their variation of height, foliage shape and colour changes throughout the seasons, as well as their bloom texture.

One of my favourites, *Miscanthus sinensis* 'Saturnia' grows tall (2.5m high) and gives a beautiful gentle movement in the wind. It creates exceptional visual interest through the arching habits of its blooms which are light pink to silver. At the back of the border,



Miscanthus sinensis
'Saturnia'



Miscanthus sinensis
'Kleine Silberspinne'

the giant grass, *Miscanthus x giganteus* shoots up its flower heads like fireworks up to 4m high. Whereas *Miscanthus sinensis* ‘Silberfeder’ creates shorter fountains at half the height (up to 2.1m) that softly shimmer in the sun and slightest breeze.

Early in the growing season, *Miscanthus* is used throughout the border to provide a pause for the eye exhibiting its lush green of basal growth. In winter, the grand structure and mellow biscuit-coloured seed heads gives lasting beauty and inspires endurance of withstanding difficult conditions. *Miscanthus sinensis* ‘Kleine Silberspinne’ (up to 1.5m) always stands well into late winter with its light white to golden brown coloured seed heads sometimes enhanced with a frosty cover creating an extravagant look when seen glistening in the sunlight.

Other varieties take prime position at the front and edge of the border. *Miscanthus nepaliensis* and *Miscanthus sinensis* ‘Rotsilber’ (1.5-1.8m) perform this ‘front-row’ arching habit perfectly and help to blur the hard edge of the border by providing an eye-catching spillage into the walkway. In the winter months when their foliage and plumes also turn into a warm beige brown, they continue to provide structure and focal points. *Miscanthus nepalensis* also makes a stunning container plant for its delicate structure and stunning flowers.

Miscanthus species are best suited to sunny, hot, and drier conditions. Warm climate grasses such as *Miscanthus* emerge later, grow slower and flower after mid-summer. They start to put on basal growth in late spring and the light pink, white and green plumes of their flowers start in late July depending on the variety. We keep the flowers on all grasses for winter structure and as a food source for our robin, blue-tit and blackbird families and other wildlife. Regarding cutting them back in winter, warm climate grasses shall best be left

alone until spring until they have put on a bit of growth. We then tie string around each plant and use an electric hedge cutter at the base to simply remove the foliage ready for spring.

I found it interesting that the giant *Miscanthus* (*Miscanthus x giganteus*) has been studied across Europe since 1983 as a source of alternative energy. *Miscanthus x giganteus* for its potential as a bioenergy crop. It has a high biomass yield, low mineral content, and rapid growth rate. A finding I can certainly support, with our plant in the High Border needing to be reduced to a third every second year to control its vigorous spread. It’s a powerful and well admired statement plant that is worth the effort. It will be interesting to see if it does become a source of renewable energy also.

The range of *Miscanthus* varieties used in the High Border soften the border’s planting scheme and produce transparency through a richly planted border. I have observed and studied plant ‘habits’ over more than a decade of growing seasons at various UK gardens, including the Inner Temple Garden. Acknowledging plants’ adaptability to changing, intensifying, and challenging environmental conditions, ornamental grasses including *Miscanthus* have evolved into one of my top ten perennials in naturalistic gardening and sustainable landscape design.

Qualities and attributes I value are their incredible long season of interest, which within the microclimate at The Inner Temple Garden can stretch over eleven months most years; their adaptability to tough growing conditions such as drought and cold; their beauty and easiness as an architectural knitting plant within a mixed border; their ability to eliminate the use of pesticides and herbicides. With a growing awareness of climate change and the increased frequency of drought conditions, ornamental grasses such as *Miscanthus* are a sensible, responsible, and beautiful choice.

I am excited to soon be visiting Potsdam to go to the famous Karl Foerster Garden in Germany, following the history of *Miscanthus* breeding in Europe back to its starting point. There I will have the opportunity to observe ornamental grasses and perennials on display and to discuss the different varieties’ attributes with the Head Gardener. I am sure I will be bringing back lists and ideas to add to our collections which may include further additions to our *Miscanthus* collection.



Miscanthus sinensis
‘Silberfeder’.

Miscanthus nepalensis

Library



Saturday Opening Hours

Opening hours are 10.00am to 5.00pm

October – November 2022

October

1 October	Middle Temple
8 October	Gray's Inn
15 October	Inner Temple
22 October	Lincoln's Inn
29 October	Middle Temple

November

5 November	Gray's Inn
12 November	Inner Temple
19 November	Lincoln's Inn
26 November	Middle Temple

Tours of the Library

We continue to offer tours of the refurbished Library. Users can ask at the Enquiry Point for a tour, or book a tour by contacting librarytours@innertemple.org.uk

One-to-One Training

Library staff are available to provide one-to-one training on using databases, researching legal topics, and other aspects of legal research. Enquiries should be sent to trainingsessions@innertemple.org.uk

Qualifying Sessions on Legal Research

Library staff will be involved in the qualifying sessions on legal research on the following dates: 19 October 2022 and 21 February 2023.

The session in October will cover basic legal research; the one in early 2023 will move on to more advanced aspects. Enquiries about bookings should be made to the Education & Training Department.

Databases

Sessions on using the main legal subscription databases will be organised for early autumn. Details will be announced via Twitter, the Library's newsletter, and by targeted emails. These sessions will help attendees achieve certification in Lexis Library and Westlaw UK – something that will enhance a CV.

New Pupils

The Library offers the following for new pupils:

- Lunchtime inductions followed by a tour
- Group tours or individual tours
- Legal research training – one-to-one or a group session (date tbc)

Please contact tdennis@innertemple.org.uk to find out more.

innertemplelibrary.org.uk



History Society

MONDAY 10 OCTOBER 2022

Human Rights in Britain and France from Thomas Becket to the French Revolution

Sir Michael Tugendhat

“The whole race of men upon the earth arose from the same origin, ... delights in the same heavens, lives the same, and dies the same ...” – 1159, John of Salisbury (c1120-1180), secretary to Thomas Becket (1119-1170), and Bishop of Chartres (1176-1180).

Slavery, as a legally recognised status, disappeared from Northern France and England around the 13th century. This momentous development gave rise to the legal recognition of equality, liberty, and other human rights, and inspired the eventual abolition of slavery worldwide in the 19th and 20th centuries. Whatever the other contributory causes of these developments, the legal language in which these ideas were expressed in France and Britain originated in France, and evolved in a dialogue between lawyers of the two countries, among others, which continues to this day.

Sir Michael Tugendhat, Honorary Professor of Law, University of Leicester, Inner Temple Bencher, joint author with Elizabeth de Montlaur Martin of the *Les droits du genre humain: la liberté en France et en Angleterre (1159-1793)*, [*The rights of mankind: liberty in France and England (1159-1793)*] Société de législation comparée, Paris, 2021, which was recently awarded a prize by the Académie des Sciences Morales et Politiques.

TO BOOK

innertemple.org.uk/humanrights

COST

In Person: £11.75; Online: Free

ENQUIRIES

members@innertemple.org.uk
020 7797 8264

WHERE

In-person and livestreamed
from The Inner Temple, London EC4Y 7HL

WHEN

Monday 10 October, 6pm – 7pm (GMT+1:00)

William Charles Niblett: A Life Re-Examined

By Master Victor Temple



Ask yourself what really lies behind the simple words on this plaque? Was William Niblett a dry but worthy Chancery lawyer, the master of nice points and proponent of arcane but lucrative argument? Perhaps he was in the mould of a flamboyant but persuasive member of the Criminal Bar, irritating judges and opponents alike, flash as they come but beloved by all on the celebrity circuit? Or was he the lawyer of choice for those who wished to conduct their litigation discreetly, upright in every respect, a Mason, a member of all the best London Clubs, and known (at least to the public) for doing the right thing?

Alas, Niblett was none of the above, all of which he would have found unfulfilling. His was a life that started in Bengal and ended, 68 years later, under the wheels of a No 6 London bus, having experienced business failure, bankruptcy, and the death of his first wife en route. He married three times, the third time bigamously, the latter expedition resulting in a term of immediate imprisonment.

Having qualified, he spent time – giving the term a non-criminal connotation – in Cape Coast Castle (Ghana), where he not only

started a local paper, but commenced a legal practice, leading, *inter alia*, to an appearance before Lesingham Batley, C.J. Suffice to say he triumphed, success being achieved by a combination of advantageous evidence and His Lordship's marked aversion to his opponents style of cross-examination. Read the judgement and learn as a lesson.

In 1890, he moved to Singapore, where for the next 20 years he enjoyed a varied and overall successful practice. Although marred by the occasional censure, his indiscretions were devoid of any real turpitude and overlooked by the Courts. One can almost hear the words “*Very well, Mr Niblett, we needn't trouble you*”, (translated as “*Go away and watch your step in the future*”) being uttered from the Bench. The authorities today would doubtless be rather more exercised by his approach.

The real questions are, where did his fortune come from? What type of properties did he own? Could it all be the fruits of a law practice? Could you cope with a trigger warning?

Read all about it, as the newspaper vendors used to shout by the top of Middle Temple Lane, by going to innertemple.org.uk/history



IN THE SPOTLIGHT

Chaucer Room

The Chaucer Room is one of two rooms available for overnight stays at the Inn and is located in Dr Johnson's Building which was built by the architect Sydney Smirke.

Named after Geoffrey Chaucer, reputed to have been a member of the Inn, the room features traditional furnishings including a four poster bed, making it the perfect choice for your stay.

catering@innertemple.org.uk | 020 7797 8230

£180

per room,
per night until
the end of 2022

£190

per room,
per night from
1 January 2023

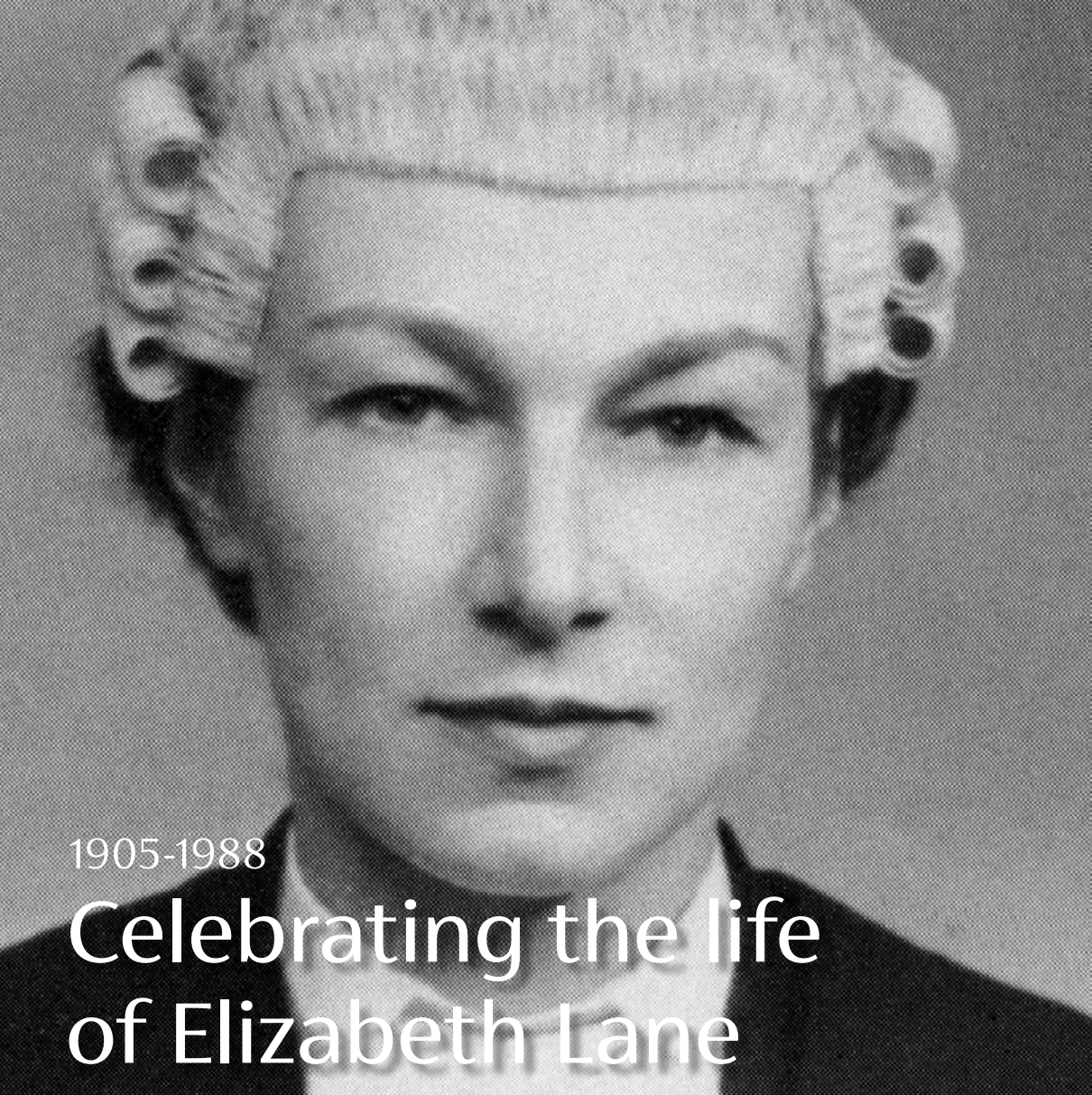


'Tis the season to... book your Christmas event

It's never too early to think about booking your Christmas celebration.

Whether it is a small lunch or an extravagant party, we have packages suitable for all. Choose from our traditional rooms on the first floor or our modern 4th floor rooms for intimate dinners and receptions.

Contact us for more information at venuehire@innertemple.org.uk or call 020 7797 8230.



1905-1988

Celebrating the life of Elizabeth Lane

This year we mark the 60th anniversary of the first female judge in a county Court – Elizabeth Lane.

She was appointed a KC in 1950, the third woman after Rose Helibron and Helena Normanton. She was appointed as the first female judge in the county court in 1962. In 1965, she became the first woman to sit in the High Court and in 1966 she was elected the first Bencher of any Inn of Court.

She decided against any higher education after school where her chief interest was hockey, opting to “have a good time instead” and travelled to Montreal to stay with her brother, where she met her husband Randall Lane. When he decided to become a barrister in 1936, he suggested she study with him. Although believing she would be “no good at it” she became a student member of the Inn in 1937 and was called to the Bar in 1940.

Following the completion of her pupillage with Geoffrey Howard as her supervisor, she began practising on the Midland Circuit, specialising in civil work

The archive is lucky to have the diaries of Master Monier-Williams, a former Bencher of this Inn whose extensive diaries record the

many events and committees he attended in the 1980s. He mentions Elizabeth Lane many times in his memoirs and noted her extremely active involvement at the Inn. In particular her regular attendance at Bench Tables and the Scholarships Committee.

“As a judge she was kindly, considerate, and courteous particularly to the young and inexperienced and a friendly and encouraging smile would often greet the stumbling beginner. But quite rightly she could not tolerate sloppiness, bad preparation, repetition, or prolixity.”

Lane herself suggested in her biography that her success at the Bar was down to good health and stamina, a capacity for hard work, a good temper, her ability to conceal her true feelings, not becoming emotionally involved, a pleasing voice, and good luck.

She moved to Winchester following the death of her husband in 1975 and died in 1988.

Her life and career is an inspiration for young lawyers. The very court robes specially made for her high court appointment are still passed to female judges elevated to the same position.

Reader's Lecture Nights

MONDAY 14 NOVEMBER



Dr Suzy Lishman CBE

Consultant Histopathologist and Medical Examiner in Peterborough and a past President of the Royal College of Pathologists

The Role of the Medical Examiner

TO BOOK

innertemple.org.uk/events

COST

In person £11.75; Online £7

ENQUIRIES

members@innertemple.org.uk

020 7797 8250

Equivalent to 1hr CPD

WHERE

In person and livestreamed

WHEN

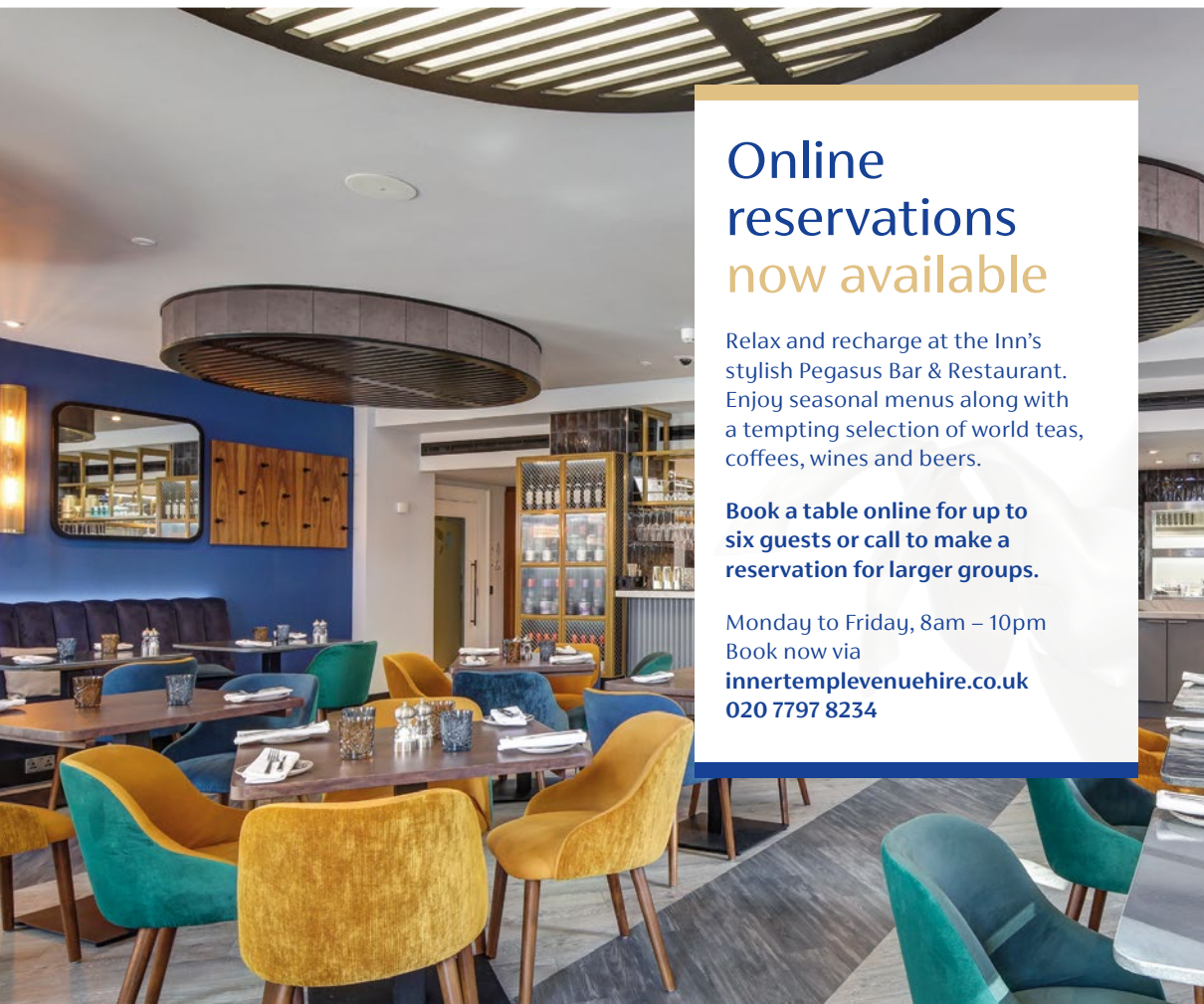
6pm – 7.30pm

Online reservations now available

Relax and recharge at the Inn's stylish Pegasus Bar & Restaurant. Enjoy seasonal menus along with a tempting selection of world teas, coffees, wines and beers.

Book a table online for up to six guests or call to make a reservation for larger groups.

Monday to Friday, 8am – 10pm
Book now via
innertemplevenuehire.co.uk
020 7797 8234





Temple Music

We celebrate the return to Inner Temple's magnificent Treasury Building following its recent refurbishment with two world-class concerts:



The Sublime

Schubert's sublime
String Quintet

Doric String Quartet
Pieter Wispelwey *cello*

Wednesday 5th October 2022
7pm – 8.40pm | Inner Temple Hall



Doric String Quartet



Pieter Wispelwey

Barátság

Four exceptional musicians mark the centenary of **Béla Bartók's first visit to London** with a luxurious programme of chamber music and song

Júlia Pusker *violin* | Benjamin Hulett *tenor*
Libby Burgess *piano* | James Cheung *piano*

Monday 17th October 2022
7pm – 8.40pm |
Inner Temple Parliament Chamber



Benjamin Hulett



Júlia Pusker

Tickets: £5 - £40

templemusic.org | 020 7427 5641



Temple Church

SPECIAL EVENTS
MICHAELMAS TERM 2022

OCTOBER

Wednesday 5 October, 6.00pm
Choral Evensong – First Choral Evensong of
The Legal Year

Thursday 6 October, 6.00pm
Memorial Service
Master Anthony Boswood (Middle Temple)

Tuesday 18 October, 6.00pm
Memorial Service
Master Murray Pickering (Inner Temple)
The family would be grateful if you
would kindly let them know if
you plan to attend by emailing
murraypickeringmemorial@gmail.com

NOVEMBER

Wednesday 2 November, 6.00pm
Choral Evensong for All Saints and
All Souls Day

Sunday 13 November, 10.55am
Choral Mattins: Remembrance Sunday

Wednesday 30 November, 6.00pm
Advent Carol Service

Contacts

The Reverend Robin Griffith-Jones
Master of the Temple
07834 521 471
master@templechurch.com

The Reverend Mark Hatcher
Reader of the Temple
reader@templechurch.com

Catherine de Satgé
020 7353 8559
catherine@templechurch.com

Temple Church
www.templechurch.com

DECEMBER

Thursday 8 December, 6.00pm
Bah Humbug! A Christmas Celebration
with Carols and Readings
Booking is not required for this service.

Sunday 11 December, 11.15am
Temple Church Carol Service prior to
Christmas lunch in The Inner Temple.
To book for the service:
Contact Catherine de Satgé
To book for the lunch:
members@innertemple.org.uk
This carol service will be repeated on
15 and 18 December.

Children's Nativity Play at 3.30pm followed
by Children's Christmas Tea in Inner Temple.
To book for the tea:
members@innertemple.org.uk
If your children or grandchildren
would like to take part in the play,
contact Catherine de Satgé

Thursday 15 December, 6.00pm
Temple Church Carol Service

Sunday 18 December, 11.15am
Temple Church Carol Service prior to
Christmas lunch in Middle Temple.
To book for the service,
contact Catherine de Satgé
To book for the lunch:
members@middletemple.org.uk

Saturday 24 December, 11.15pm
Christmas Eve – Choral Communion
with the Temple Singers

Sunday 25 December, 11.15am
Christmas day – Choral Mattins
with the Temple Church Choir



Private Guest Night

Private Guest Nights are wonderful social occasions to which Students, Members of Hall and Benchers can invite friends, family, colleagues and clients to enjoy the Inn's excellent hospitality.

Benchers may invite one guest. Members of Hall and Students may invite more than one guest, subject to capacity.

TO BOOK

innertemple.org.uk/pgn

Benchers, Called Members and guests: £85.25
Members Under 5 years Call and guests: £57.25
Students 41.60; Student Guests £46.85

ENQUIRIES

Rosy Humphrey
members@innertemple.org.uk

There is a fascinating history just waiting to be discovered.

Tours are for a minimum eight people at £15 a head.

Contact Jacqueline Fenton on
jfenton@innertemple.org.uk
or 020 7797 8241



Historical Tours

Staff News



SAM COOPER

We welcome Sam as the new Operations Director of the Temple Church. Before joining the Temple Church team, Sam previously worked at Kenwood House, The Historic Dockyard Chatham and The National Media Museum. He has worked on a number of major heritage projects, helping to plan sustainable, financially resilient strategies that have ensured long term success and continues to enjoy visiting a castle at the weekend with his family.



MERCY QUAYNOR

Mercy has joined the E&T Department as the Education Co-ordinator. Mercy will be supporting Vanessa Bennett with our education and development programmes for Pupils and New Practitioners. She will also run the Marshalling Scheme. Mercy has worked at a range of professional associations including the National Institute of Economic and Social Research and we're delighted to welcome her.

UMUT KAV

We welcome Umut who joins the Archive Department as Assistant Archivist. He works also at the Jencks foundation as the archivist in charge of the fascinating collection of the postmodern architect, cultural theorist and philanthropist Charles Jencks (1939 -2019). He will be assisting with the creation of a digital archive repository for the Inn.



EMILY BLACKMORE

Emily left the Garden team in September to pursue a new horticultural direction growing vegetables for cafes. Emily first joined the Garden as a volunteer, before becoming the Garden Trainee from 2016-2018. Emily has left an enduring mark on the Garden, most notably through the redesign of the Long Border. We wish Emily all the best in her new adventure and look forward to her coming back to visit the Garden.



STEFANO CIABO

Stefano joined the Inn as the Garden Trainee in September. Previous to this, he trained at Aberglasney Gardens in south Wales. Stefano has a passion for historic Gardens and public horticulture. He will now spend two years working and studying alongside the Garden team. We welcome Stefano to the Inn and wish him all the best for his traineeship.



SAM FRY

Sam completed the Garden Traineeship at the end of August after two years. We would like to congratulate Sam on his new position as the RHS/Garden Club of America Interchange Fellow for 2022/2023. We would like to thank Sam for all his hard work, enthusiasm and dedication whilst on the Traineeship, and look forward to seeing where his horticultural career takes him following his time in America.

Staff News

YOUR CATERING TEAM



ROWAN BOOTHROYD

After 14 years of working within hospitality, from luxury hotels to boutique cruise ships, Rowan now joins us as an Events Manager. Rowan has spent time in Surrey for University, Germany building ships, France where his family live, but remains a Yorkshireman at heart! In line with the role, Rowan enjoys everything food and beverage related. A strong cheeseboard and a nice bottle of wine are Rowan's absolute home essentials.



TOM SMITH

Tom joins us as an Event Sales Executive, having worked at the Centre for Engineering and Manufacturing in his last role. There he worked with huge corporations such as Ford on conferences and exhibitions. We are delighted to welcome him to the team.



DAISY FROST

Daisy recently joined us as our Sales Manager from M&C Saatchi Merlin, where she was part of the LiveX event team. She has also worked for CH&Co who are a big competitor of Searcys so we welcome her experience.



GEORGE MCGOWAN

George joined us at the beginning of September as our new Sous Chef. George has a wealth of experience working for companies such as Mosimann Events and Rocket Catering. George worked for us in a casual capacity before July, so we look forward to welcoming him as a full-time member of the team.



GASTON SAMSON

Gaston joined us in September as our Pegasus Restaurant and Bar Supervisor. He previously worked for Searcys at the Royal College of Surgeons, so we very much look forward to working with him and benefiting from his skills.



SAMSON EMMANUEL

Samson originally joined the team as an agency member of staff before becoming a full-time Kitchen Porter with the kitchen team. We are all very excited to see Samson grow in this role.



ALEX DUP

Having worked at the Ivy Collection and The Mitre in Holland Park, Alex became a Private Chef for a family in Richmond during the pandemic. He has now joined us as the Sous Chef for the Pegasus Bar and Restaurant. We look forward to him putting his own twist on the menu and to see the seasonal changes.



KENNY OYENIYA

Kenny joined The Inner Temple as a Kitchen Porter at the end of May and has become a valuable member of the kitchen team. We are delighted to have him on the team.

peba

Helping to shape the environment for the future: making a career at the Planning & Environmental Bar

The event is organised by the Planning & Environment Bar Association (PEBA) with the generous support of the Inner Temple. It will take place in the beautiful new lecture theatre at the Inn.

The evening will give an insight into a career at the planning and environmental bar and the fascinating opportunities it provides to people from all backgrounds and walks of life. The speakers will include junior and senior members who will share their experiences and provide guidance to those considering this career path. The talks will be followed by a drinks reception with the opportunity for more informal discussion with barristers.

Date & Time:

Monday 28th November 2022,
6.30pm – 9pm

Venue:

In person at the Lecture Theatre, Inner Temple, Crown Office Row, London EC4Y 7HL or online.

How to sign up:

Spaces are limited. Please email: administrator@peba.org.uk to book early and avoid disappointment. You must be 18 or over to attend in person.

Who is this event for?

The event is primarily aimed at university and Bar students interested in hearing about a potential career at the Planning and Environmental Bar.

Come and Sing!

The Bar Choral Society is looking for new members. If you are a keen singer, or keen to sing and enjoy choral music – join us!

The Bar Choral Society is a non-audition choir based in Temple with singers drawn from across the legal system.

In addition to judges, barristers and pupils, members include solicitors and trainees, those who work in Chambers, the Inns, and their families.

Led by our Music Director, Greg Morris, our friendly Monday evening rehearsals take place in Temple Church from 6.15pm to 7.45pm. The choir gives approximately two concerts per year with professional soloists and orchestras – performing everything from Gabrieli to Gershwin, Byrd to Bernstein. We also branch out of Temple from time to time: we recently performed a joint concert with The Parliament

Choir at St. John's, Smith Square to mark Vaughan-Williams' 150th anniversary.

The choir's activities are supported through member subscriptions. These are presently set at £180 for silks and senior lawyers, £90 per year for junior barristers/lawyers and non-lawyers and no charge for pupils/trainees. This income, together with ticket sales and donations, covers the Society's costs.

Fully back in action following Covid, we are looking for new members. Are you a singer looking for a choir? Are you someone who sang at school or university and hasn't sung since? Are you a musician who has never sung in a choir? Do you want to try choral singing? You would all be welcome.



Come along to one of our next three rehearsals without commitment and try it out. These will be held on 12, 19 and 26 September in Temple Church from 6.15pm.

Our next concert is on **29 November 2022** when the choir will perform Schubert's Mass in G and Haydn's Salve Regina. If you are interested in coming to a rehearsal, joining or would like further information:

Please look at our website:

www.barchoralsociety.co.uk

Contact us on:

info@barchoralsociety.co.uk

All voice parts are very welcome: tenors and basses in particular

We look forward to meeting you next term!

BAR

CHORAL
SOCIETY

Bar Lawn Tennis Society Hargreaves Cup



Teams from all four Inns of Court at the Bar Lawn Tennis Society inter-Inn tournament, the Hargreaves Cup, including Manager of Middle Temple team, overall tournament manager and Chairman of the Society, John Taylor KC (centre left).

Undeterred by the amber weather warning, the Inner Temple team, captained by Selva Ramasamy KC, comprising of Greg Johnson, associate members Kiran Ramasamy and Matthew Ground, won the inter-Inn Bar Lawn Tennis Society tournament, the Hargreaves Cup, on Sunday 17 July 2022, without dropping a set. It is the second year in a row that the Inner Temple team has won the annual event hosted by the Society's Chairman John Taylor KC at Chesham 1879 Tennis and Squash and the third consecutive occasion the tournament has been played that the Inner Temple team has won. Last year, for the first time the victorious team was formed of two father/son pairs, Selva Ramasamy KC, associate member Kiran Ramasamy, Cameron Brown KC and associate member Conrad Brown. In 2019, prior to the 2020 lockdown, the winning team comprised Selva Ramasamy KC, Richard Ground KC, Cameron Brown KC and, associate member, Kiran Ramasamy. The fixture also offers opportunities to celebrate and socialise afterwards at the post-tournament barbecue in the grounds of the Buckinghamshire club.

For a subscription of £20 a year the Bar Lawn Tennis Society provides judges and barristers with a wide range of tennis matches and tournaments for its members to participate in during the summer months each year, including matches against the Irish Bar, the Law Society and the Institute of Barristers' Clerks, many of which now incorporate a social

side following the protracted periods of lockdown. The internal singles and doubles tournaments are held at venues such as the Queen's Club, Chesham's and Lincoln's Inn Fields, whilst teams representing the Bar also have the opportunity to play at Wimbledon, Roehampton and Moor Park. The subscription is waived for students, pupils and those in their first two years of tenancy and the Society's active membership welcomes new members. Anyone wishing to join should contact the Hon Secretary, Mr Alex Perry, at Harcourt Chambers on aperry@harcourtchambers.co.uk.

Inner Temple Team. Matthew Ground, Kiran Ramasamy (associate members of Bar Lawn Tennis Society), Selva Ramasamy KC and Greg Johnson (members of Bar Lawn Tennis Society).



Michaelmas Term Diary

OCTOBER

- 4 Executive Committee
Pupils Advocacy Introductory Evening
- 5 Books Sub-Committee
First Choral Evensong of the Legal Year
- 6 Bench Table
Pupils' Criminal Case Analysis Session
- 7 **Bar Guest Night**
- 10 **EDI Series: Being LGBTQ+ at the Bar**
History Society Lecture
Pupils' Civil Case Analysis Session
- 11 Estates Committee
- 12 Library Committee
- 13 **Deferred Trinity Term Call Night**
- 14-16 Pupils' Advocacy Residential Weekend
- 17 EDI Sub-Committee
CIRCUIT SESSION: How to cross-examine a vulnerable witness
- 18 International Committee
- 19 **Legal Research Training**
- 20 Insight Event: Becoming a Barrister
Ethics in Practice
- 24 **Advocacy Demo & Lecture with Master Hodge**
- 25 Insight Event: Becoming a Barrister
Revels: Inner Temple's Got Talent

- 26 Investment Sub-Committee
- 27 **EDI Series: Class and Socio-Economic Diversity at the Bar**
- 28 Discovery Day for Schools
JBA Halloween Quiz
- 31 Student Engagement and Support Committee
EDI Series: Class and Socio-Economic Diversity at the Bar

NOVEMBER

- 1 Training Advocacy & The Vulnerable
Insight Event: Becoming a Barrister
Selden Society & Four Inns of Court Annual Lecture
- 2 **Grand Day**
- 3 **Wellbeing at the Bar**
- 5 Pupils' Advocacy Applications Day
- 7 Bar Liaison Committee
- 8 Insight Event: Becoming a Barrister
Executive Committee
- 9 **Pupillage Q&A**
- 10 Pegasus Scholarship Trust
South Eastern Circuit Dinner
- 12 Pupils' Advocacy Applications Day
- 13 **Remembrance Sunday Lunch**

Treasurer's Teas

The Treasurer will be continuing her series of informal teas this term as an opportunity to welcome members back to the Inn, now that Project Pegasus and the redevelopment of the Treasury Building is complete. The Teas are an opportunity to chat informally with members of differing seniority about the work of the Inn, how we can all engage with the Inn's outreach work and also create mentoring opportunities.

We are hoping to keep each event small to allow for close conversation. Access to the events are by invitation only. To register your interest in attending, please contact **Edwina Koroma**.



- 14 **Reader's Lecture Night**
- 16 Discovery Day for Schools
Private Guest Night
(Choral Evensong)
- 17 In Focus
- 21 **Social Context of The Law Series**
- 24 **Michaelmas Term Call Night**
- 28 Qualifying Sessions Committee
- 29 Estates Committee
CIRCUIT SESSION: Reality & Resiliency at the Bar
- 30 Advent Carol Service

- 8 Drama Society Performance Advocacy Training Committee
- 9-11 **Students' Residential Advocacy Weekend**
- 11 **Temple Church Carol Service Christmas Lunch Children's Nativity Play Children's Christmas Tea**
- 12 Education & Training Committee
- 13 Weekday Christmas Lunch in Hall
- 14 EDI Sub-Committee
- 15 International Committee
- 21 Hall Closes
Michaelmas Term Law Sittings End

DECEMBER

- 1 Bench Table
CIRCUIT Pupillage Q&A
- 3 Advocacy & Pupillage Applications Advice Day
- 4 Drama Society rehearsal
- 5 Bar Liaison Committee
- 6 Executive Committee
- 7 Scholarships and Outreach Committee
Drama Society Performance Pension Scheme Trustees

JANUARY

- 3 Inner Temple Offices Open Hall Opens
- 11 Hilary Term Law Sittings Begin

KEY

- Green: Qualifying Sessions**
- Blue: Special Events**
- Bronze: Bencher only Events**

Treasury Office

Henrietta Amodio
Director of the Treasury Office
020 7797 8181
hamodio@innertemple.org.uk

Jude Hodgson
Membership Registrar & Data Protection Lead
020 7797 8206
jhodgson@innertemple.org.uk

Kate Peters
Member Events & Administration Manager
020 7797 8183
kpeters@innertemple.org.uk

Nadia Ruiz
Assistant to DTO
020 7797 8182
nruiz@innertemple.org.uk

Jacqueline Fenton
Membership & Records Assistant
020 7797 8241
jfenton@innertemple.org.uk

Rosy Humphrey
Member Events & Administration Assistant
020 7797 8264
members@innertemple.org.uk

Paul Clark
Technology and Communications Officer
020 7797 8229
pclark@innertemple.org.uk

Celia Pilkington
Archivist
020 7797 8251
cpilkington@innertemple.org.uk

General enquiries and parking permits
020 7797 8250



Sunday 11 December 2022

Carol Service: in Temple Church

AT 11.15AM

Please note that you need to book for the Carol service separately through the Temple Church, as this is a hugely popular event.

Christmas Lunch in Inner Temple Hall

AT 12.15PM

For Inner Temple members

Called Members and Guests £51.75; Student and Guests £49.45,
Children 6-12: £24.75; Child under 6yrs £15.45

Children's Carol Service & Nativity Play

AT 3.30PM

Family Tea in Inner Temple Hall

WITH FATHER CHRISTMAS AT 4PM

Tickets: Child £13.75, Adult £5

To Book

Carol Service:
Catherine de Satgé
020 7353 8559
catherine@templechurch.com

Christmas Lunch and Family Tea:
Treasury Office
innertemple.org.uk/christmaslunch
innertemple.org.uk/christmastea
members@innertemple.org.uk

Children's Carol Service
& Nativity Play:
Catherine de Satgé
020 7353 8559
catherine@templechurch.com

